

Anti-ANKLE1 Antibody

Catalog Number: A14094

About ANKLE1

Ankyrins are membrane adaptor molecules that play important roles in coupling integral membrane proteins to the spectrin-based cytoskeleton network. ANKLE1 (Ankyrin repeat and LEM domain containing 1) is a member of ankyrin repeat and LEM domain containing family. It is a potential single-pass membrane protein that contains ankyrin repeats and a Lem domain. Ankyrin repeats mediate protein-protein interactions and are among the most common structural motifs in known proteins. While the function of this protein is still under investigation, its gene locus has been associated with susceptibility to ovarian and breast cancer.

Overview

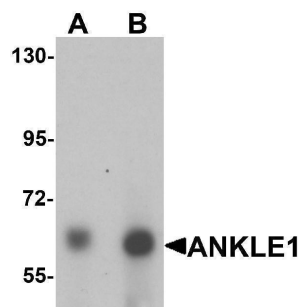
Product Name	Anti-ANKLE1 Antibody
Reactive Species	Human, Mouse, Rat
Description	Boster Bio Anti-ANKLE1 Antibody (Catalog # A14094). Tested in ELISA, WB applications. This antibody reacts with Human, Mouse, Rat.
Application	ELISA, WB
Clonality	Polyclonal
Formulation	ANKLE1 Antibody is supplied in PBS containing 0.02% sodium azide.
Storage Instructions	ANKLE1 antibody can be stored at 4°C for three months and -20°C, stable for up to one year. Avoid repeated freeze-thaw cycles. Antibodies should not be exposed to prolonged high temperatures.
Host	Chicken
Uniprot ID	Q8NAG6

Technical Details

Immunogen	ANKLE1 antibody was raised against a 15 amino acid synthetic peptide near the carboxy terminus of human ANKLE1. The immunogen is located within the last 50 amino acids of ANKLE1.
Cross Reactivity	Two isoforms of ANKLE1 are known to exist. ANKLE1 antibody is predicted to not cross-react with ANKLE2
Isotype	IgY
Form	Liquid
Concentration	1 mg/mL
Purification	ANKLE1 Antibody is affinity chromatography purified via peptide column.
Suggested Dilutions	ANKLE1 antibody can be used for detection of ANKLE1 by Western blot at 1 - 2 ug/mL.

Antibody validated: Western Blot in human samples. All other applications and species not yet tested. Optimal dilutions for each application should be determined by the researcher.

Anti-ANKLE1 Antibody (A14094) Images



Western blot analysis of ANKLE1 in 293 cell lysate with ANKLE1 antibody at (A) 1 and (B) 2 ug/mL.

Submit a product review to Biocompare.com

Submit a review of this product to Biocompare.com to receive a \$20 Amazon.com giftcard! Your reviews help your fellow scientists make the right decisions. Thank you for your contribution.



Anti-ANKLE1 Antibody

For Research Use Only. Not for use in diagnostic procedures.