

Anti-Synaptotagmin X SYT10 Antibody

Catalog Number: A14108

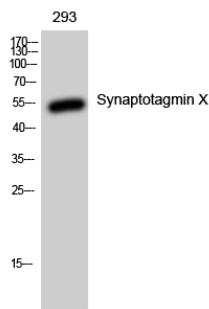
Overview

Product Name	Anti-Synaptotagmin X SYT10 Antibody
Reactive Species	Human, Mouse, Rat
Description	Boster Bio Anti-Synaptotagmin X SYT10 Antibody catalog # A14108. Tested in ELISA, WB applications. This antibody reacts with Human, Mouse, Rat.
Application	IHC, WB
Clonality	Polyclonal
Formulation	Liquid in PBS containing 50% glycerol, 0.5% stabilizing protein and 0.02% sodium azide. This antibody is supplied in a stabilized formulation. Compatibility with conjugation reactions depends on the chemistry of the conjugation method used. For conjugation methods that are not compatible with the stabilizing components present in this formulation, a carrier-free antibody format is required.
Storage Instructions	Store at -20°C for one year. For short term storage and frequent use, store at 4°C for up to one month. Avoid repeated freeze-thaw cycles.
Host	Rabbit
Uniprot ID	Q6XYQ8

Technical Details

Immunogen	Synthesized peptide derived from Synaptotagmin X . at AA range: 380-460
Isotype	IgG
Form	Liquid
Concentration	1 mg/ml
Purification	The antibody was affinity-purified from rabbit antiserum by affinity-chromatography using epitope-specific immunogen.
Suggested Dilutions	WB 1:500-2000 IHC 1:50-300

Anti-Synaptotagmin X SYT10 Antibody (A14108) Images



Western blotting validation for Anti-Synaptotagmin X SYT10 Antibody A14108 Western Blot (WB) analysis of 293 cells using Synaptotagmin X polyclonal antibody. Electrophoresis was performed on a SDS-PAGE gel. To determine SDS-PAGE gel concentration

Submit a product review to Biocompare.com

Submit a review of this product to Biocompare.com to receive a \$20 Amazon.com giftcard! Your reviews help your fellow scientists make the right decisions. Thank you for your contribution.



Anti-Synaptotagmin X SYT10 Antibody

For Research Use Only. Not for use in diagnostic procedures.