

Anti-NOD6 NLRP9 Antibody

Catalog Number: A14119

About NLRP9

NOD6, also known as NALP9, is a member of the NALP family, a group of proteins that typically contain a NACHT domain, a NACHT-associated domain (NAD), a C-terminal leucine-rich repeat (LRR) region, and an N-terminal pyrin domain (PYD) and are involved in inflammation and innate immune defense. The bovine NOD6, which has 76% homology to its human counterpart, has been suggested to be an oocyte marker gene. In adult tissues, NALP9 mRNA is expressed exclusively in ovary and testis.

Overview

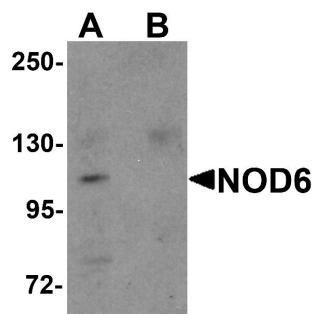
Product Name	Anti-NOD6 NLRP9 Antibody
Reactive Species	Human, Mouse
Description	Boster Bio Anti-NOD6 NLRP9 Antibody (Catalog # A14119). Tested in ELISA, WB, IHC-P, IF applications. This antibody reacts with Human, Mouse.
Application	ELISA, IF, IHC-P, WB
Clonality	Polyclonal
Formulation	NOD6 Antibody is supplied in PBS containing 0.02% sodium azide.
Storage Instructions	NOD6 antibody can be stored at 4°C for three months and -20°C, stable for up to one year. Avoid repeated freeze-thaw cycles. Antibodies should not be exposed to prolonged high temperatures.
Host	Rabbit
Uniprot ID	Q7RTR0

Technical Details

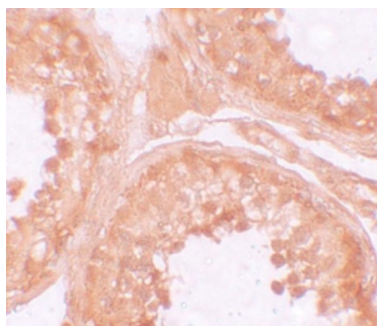
Immunogen	NOD6 antibody was raised against a 14 amino acid synthetic peptide near the amino terminus of human NOD6. The immunogen is located within amino acids 190 - 240 of NOD6.
Predicted Reactive Species	Bovine
Cross Reactivity	BX1 antibody is predicted to not cross-react with other DBX protein family members
Isotype	IgG
Form	Liquid
Concentration	1 mg/mL
Purification	NOD6 Antibody is affinity chromatography purified via peptide column.
Suggested Dilutions	NOD6 antibody can be used for detection of NOD6 by Western blot at 1 ug/mL. Antibody can also

be used for immunohistochemistry starting at 10 ug/mL. For immunofluorescence start at 20 ug/mL. Antibody validated: Western Blot in mouse samples; Immunohistochemistry in human samples and Immunofluorescence in human samples. All other applications and species not yet tested. Optimal dilutions for each application should be determined by the researcher.

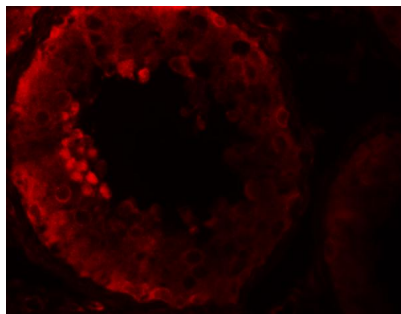
Anti-NOD6 NLRP9 Antibody (A14119) Images



Western blot analysis of NOD6 in EL4 cell lysate with NOD6 antibody at 1 ug/mL in the (A) absence and (B) presence of blocking peptide.



Immunohistochemistry of NOD6 in human testis tissue with NOD6 antibody at 10 ug/mL.



Immunofluorescence of NOD6 in human testis tissue with NOD6 antibody at 20 ug/mL.

Submit a product review to [Biocompare.com](https://www.biocompare.com)

Submit a review of this product to [Biocompare.com](https://www.biocompare.com) to receive a \$20 Amazon.com giftcard! Your reviews help your fellow scientists make the right decisions. Thank you for your contribution.



Anti-NOD6 NLRP9 Antibody