

Anti-Prefoldin 1 (E35) PFDN1 Antibody

Catalog Number: A14133

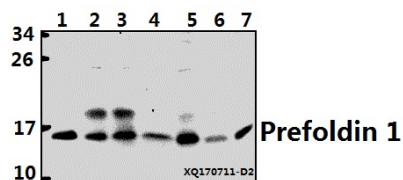
Overview

Product Name	Anti-Prefoldin 1 (E35) PFDN1 Antibody
Reactive Species	Human, Mouse, Rat
Description	Boster Bio Anti-Prefoldin 1 (E35) PFDN1 Antibody catalog # A14133. Tested in WB applications. This antibody reacts with Human, Mouse, Rat.
Application	WB
Clonality	Polyclonal
Formulation	Rabbit IgG, 1mg/ml in PBS with 0.02% sodium azide, 50% glycerol, pH7.2
Storage Instructions	Store at -20°C for one year. For short term storage and frequent use, store at 4°C for up to one month. Avoid repeated freeze-thaw cycles.
Host	Rabbit
Uniprot ID	O60925

Technical Details

Immunogen	Synthetic peptide, corresponding to amino acids 11-60 of Human Prefoldin 1.
Isotype	IgG
Form	Liquid
Concentration	1 mg/ml
Purification	The antibody was affinity-purified from rabbit antiserum by affinity-chromatography using epitope-specific immunogen and the purity is > 95% (by SDS-PAGE).
Suggested Dilutions	WB: 1:500-1:1000

Anti-Prefoldin 1 (E35) PFDN1 Antibody (A14133) Images



Western blot (WB) analysis of Prefoldin 1 (E35) polyclonal antibody at 1:500 dilution Lane1:K562 whole cell lysate(40ug) Lane2:HepG2 whole cell lysate(40ug) Lane3:A549 whole cell lysate(40ug) Lane4:U-87MG whole cell lysate(40ug) Lane5:HEK293T whole cell lysate(40ug) Lane6:H9C2 whole cell lysate(40ug) Lane7:CT-26 whole cell lysate(40ug)

Submit a product review to Biocompare.com

Submit a review of this product to Biocompare.com to receive a \$20 Amazon.com giftcard! Your reviews help your fellow scientists make the right decisions. Thank you for your contribution.



Anti-Prefoldin 1 (E35) PFDN1 Antibody

For Research Use Only. Not for use in diagnostic procedures.