

Anti-RLP2 RILPL2 Antibody

Catalog Number: A14157

About RILPL2

The Rab interacting lysosomal protein-like 2 (RLP2) protein is related to the is lysosomal protein RILP which interacts with RAB7, a small GTPase that controls transport to endocytic degradative compartments. Little is known of the exact function of RLP2, but it is thought that RILP is a downstream effector of RAB7 and both proteins act together in the regulation of late endocytic traffic, suggesting that RLP2 may be involved in endocytic traffic with RILP or play a similar role. RILP and possible RLP2 may also play a role in the biogenesis of multivesicular bodies.

Overview

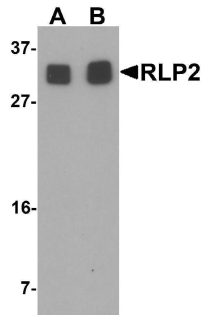
Product Name	Anti-RLP2 RILPL2 Antibody
Reactive Species	Human
Description	Boster Bio Anti-RLP2 RILPL2 Antibody (Catalog # A14157). Tested in ELISA, WB, IHC-P, IF applications. This antibody reacts with Human.
Application	ELISA, IF, IHC-P, WB
Clonality	Polyclonal
Formulation	RLP2 Antibody is supplied in PBS containing 0.02% sodium azide.
Storage Instructions	RLP2 antibody can be stored at 4°C for three months and -20°C, stable for up to one year. Avoid repeated freeze-thaw cycles. Antibodies should not be exposed to prolonged high temperatures.
Host	Rabbit
Uniprot ID	Q969X0

Technical Details

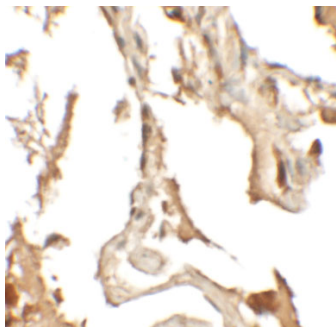
Immunogen	RLP2 antibody was raised against an 16 amino acid synthetic peptide near the center of human RLP2. The immunogen is located within amino acids 110 - 160 of RLP2.
Predicted Reactive Species	Bovine, Mouse, Rat
Isotype	IgG
Form	Liquid
Concentration	1 mg/mL
Purification	RLP2 Antibody is affinity chromatography purified via peptide column.
Suggested Dilutions	RLP2 antibody can be used for detection of RLP2 by Western blot at 1 - 2 ug/mL. Antibody can also be used for immunohistochemistry starting at 2.5 ug/mL. For immunofluorescence start at 2.5 ug/mL.

Antibody validated: Western Blot in human samples; Immunohistochemistry in human samples and Immunofluorescence in human samples. All other applications and species not yet tested. Optimal dilutions for each application should be determined by the researcher.

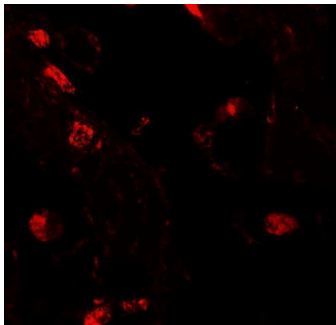
Anti-RLP2 RILPL2 Antibody (A14157) Images



Western blot analysis of RLP2 in A549 cell lysate with RLP2 antibody at (A) 1 and (B) 2 ug/mL.



Immunohistochemistry of RLP2 in human lung tissue with RLP2 antibody at 2.5 ug/mL.



Immunofluorescence of RLP2 in human lung tissue with RLP2 antibody at 20 ug/mL.

Submit a product review to [Biocompare.com](https://www.biocompare.com)

Submit a review of this product to [Biocompare.com](https://www.biocompare.com) to receive a \$20 Amazon.com giftcard! Your reviews help your fellow scientists make the right decisions. Thank you for your contribution.



Anti-RLP2 RILPL2 Antibody

For Research Use Only. Not for use in diagnostic procedures.