

Anti-SMCR8 Antibody Picoband®

Catalog Number: A14158-1

About SMCR8

Enables protein kinase binding activity and protein kinase inhibitor activity. Contributes to guanyl-nucleotide exchange factor activity. Involved in negative regulation of macromolecule metabolic process; regulation of TOR signaling; and regulation of macroautophagy. Located in chromatin; cytoplasm; and nucleoplasm. Part of guanyl-nucleotide exchange factor complex. Colocalizes with Atg1/ULK1 kinase complex.

Overview

| | |
|----------------------|---|
| Product Name | Anti-SMCR8 Antibody Picoband® |
| Reactive Species | Human |
| Description | Boster Bio Anti-SMCR8 Antibody Picoband® catalog # A14158-1. Tested in ELISA, Flow Cytometry, WB applications. This antibody reacts with Human. The brand Picoband indicates this is a premium antibody that guarantees superior quality, high affinity, and strong signals with minimal background in Western blot applications. Only our best-performing antibodies are designated as Picoband, ensuring unmatched performance. |
| Application | ELISA, Flow Cytometry, WB |
| Clonality | Polyclonal |
| Formulation | Each vial contains 4 mg Trehalose, 0.9 mg NaCl, 0.2 mg Na ₂ HPO ₄ . |
| Storage Instructions | At -20°C for one year from date of receipt. After reconstitution, at 4°C for one month. It can also be aliquotted and stored frozen at -20°C for six months. Avoid repeated freezing and thawing. |
| Host | Rabbit |
| Uniprot ID | Q8TEV9 |

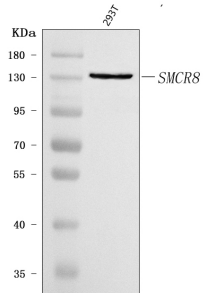
Technical Details

| | |
|-------------------------------|---|
| Immunogen | E.coli-derived human SMCR8 recombinant protein (Position: D86-D776). |
| Recommended Detection Systems | Boster recommends Enhanced Chemiluminescent Kit with anti-Rabbit IgG (EK1002) for Western blot. |
| Cross Reactivity | No cross-reactivity with other proteins |
| Isotype | Rabbit IgG |
| Form | Lyophilized |
| Concentration | Adding 0.2 ml of distilled water will yield a concentration of 500 µg/ml. |
| Purification | Immunogen affinity purified. |

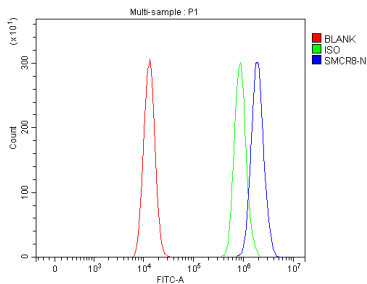
Suggested Dilutions

Western blot, 0.25-0.5 ug/ml, Human
Flow Cytometry (Fixed), 1-3 ug/ 1×10^6 cells, Human
ELISA, 0.1-0.5 ug/ml, -

Anti-SMCR8 Antibody Picoband® (A14158-1) Images



Western blot analysis of SMCR8 using anti-SMCR8 antibody (A14158-1). Electrophoresis was performed on a 5-20% SDS-PAGE gel at 70V (Stacking gel) / 90V (Resolving gel) for 2-3 hours. The sample well of each lane was loaded with 30 ug of sample under reducing conditions. Lane 1: human 293T whole cell lysates. After electrophoresis, proteins were transferred to a nitrocellulose membrane at 150 mA for 50-90 minutes. Blocked the membrane with 5% non-fat milk/TBS for 1.5 hour at RT. The membrane was incubated with rabbit anti-SMCR8 antigen affinity purified polyclonal antibody (Catalog # A14158-1) at 0.5 ug/mL overnight at 4°C, then washed with TBS-0.1%Tween 3 times with 5 minutes each and probed with a goat anti-rabbit IgG-HRP secondary antibody at a dilution of 1:5000 for 1.5 hour at RT. The signal is developed using an Enhanced Chemiluminescent detection (ECL) kit (Catalog # EK1002) with Tanon 5200 system. A specific band was detected for SMCR8 at approximately 140 kDa. The expected band size for SMCR8 is at 105 kDa.



Flow Cytometry analysis of HEL cells using anti-SMCR8 antibody (A14158-1). Overlay histogram showing HEL cells stained with A14158-1 (Blue line). To facilitate intracellular staining, cells were fixed with 4% paraformaldehyde and permeabilized with permeabilization buffer. The cells were blocked with 10% normal goat serum. And then incubated with rabbit anti-SMCR8 Antibody (A14158-1, 1 ug/1x10⁶ cells) for 30 min at 20°C. DyLight®488 conjugated goat anti-rabbit IgG (BA1127, 5-10 ug/1x10⁶ cells) was used as secondary antibody for 30 minutes at 20°C. Isotype control antibody (Green line) was rabbit IgG (1 ug/1x10⁶) used under the same conditions. Unlabelled sample without incubation with primary antibody and secondary antibody (Red line) was used as a blank control.

Submit a product review to Biocompare.com

Submit a review of this product to Biocompare.com to receive a \$20 Amazon.com giftcard! Your reviews help your fellow scientists make the right decisions. Thank you for your contribution.



Anti-SMCR8 Antibody

For Research Use Only. Not for use in diagnostic procedures.