

Anti-TDE2L SERINC2 Antibody

Catalog Number: A14175-1

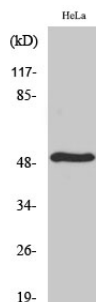
Overview

| | |
|----------------------|---|
| Product Name | Anti-TDE2L SERINC2 Antibody |
| Reactive Species | Human, Mouse, Rat |
| Description | Boster Bio Anti-TDE2L SERINC2 Antibody catalog # A14175-1. Tested in ELISA, IF, IHC, WB applications. This antibody reacts with Human, Mouse, Rat. |
| Application | ELISA, IF, IHC, WB |
| Clonality | Polyclonal |
| Formulation | Liquid in PBS containing 50% glycerol, 0.5% stabilizing protein and 0.02% sodium azide. This antibody is supplied in a stabilized formulation. Compatibility with conjugation reactions depends on the chemistry of the conjugation method used. For conjugation methods that are not compatible with the stabilizing components present in this formulation, a carrier-free antibody format is required. |
| Storage Instructions | Store at -20°C for one year. For short term storage and frequent use, store at 4°C for up to one month. Avoid repeated freeze-thaw cycles. |
| Host | Rabbit |
| Uniprot ID | Q96SA4 |

Technical Details

| | |
|---------------------|---|
| Immunogen | The antiserum was produced against synthesized peptide derived from human SERC2. AA range:341-390 |
| Isotype | IgG |
| Form | Liquid |
| Concentration | 1 mg/ml |
| Purification | The antibody was affinity-purified from rabbit antiserum by affinity-chromatography using epitope-specific immunogen. |
| Suggested Dilutions | WB 1:500-1:2000 IHC 1:100-1:300 IF 1:200-1:1000 ELISA 1:40000 |

Anti-TDE2L SERINC2 Antibody (A14175-1) Images



Western blotting validation for Anti-TDE2L SERINC2 Antibody A14175-1 Western Blot (WB) analysis of specific cells using TDE2L polyclonal antibody. Electrophoresis was performed on a SDS-PAGE gel. To determine SDS-PAGE gel concentration

Submit a product review to Biocompare.com

Submit a review of this product to Biocompare.com to receive a \$20 Amazon.com giftcard! Your reviews help your fellow scientists make the right decisions. Thank you for your contribution.



Anti-TDE2L SERINC2 Antibody

For Research Use Only. Not for use in diagnostic procedures.