

## Anti-SLC25A39 Antibody Picoband®

Catalog Number: A14204-1

### About SLC25A39

This gene encodes a member of the SLC25 transporter or mitochondrial carrier family of proteins. Members of this family are encoded by the nuclear genome while their protein products are usually embedded in the inner mitochondrial membrane and exhibit wide-ranging substrate specificity. Although the encoded protein is currently considered an orphan transporter, this protein is related to other carriers known to transport amino acids. This protein may play a role in iron homeostasis.

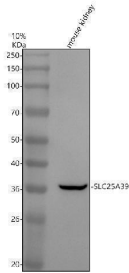
### Overview

Product Name	Anti-SLC25A39 Antibody Picoband®
Reactive Species	Mouse
Description	Boster Bio Anti-SLC25A39 Antibody Picoband® catalog # A14204-1. Tested in WB applications. This antibody reacts with Mouse. The brand Picoband indicates this is a premium antibody that guarantees superior quality, high affinity, and strong signals with minimal background in Western blot applications. Only our best-performing antibodies are designated as Picoband, ensuring unmatched performance.
Application	WB
Clonality	Polyclonal
Formulation	Each vial contains 4 mg Trehalose, 0.9 mg NaCl, 0.2 mg Na <sub>2</sub> HPO <sub>4</sub> .
Storage Instructions	At -20°C for one year from date of receipt. After reconstitution, at 4°C for one month. It can also be aliquotted and stored frozen at -20°C for six months. Avoid repeated freezing and thawing.
Host	Rabbit
Uniprot ID	Q9BZJ4

### Technical Details

Immunogen	A synthetic peptide corresponding to a sequence in the middle region of human SLC25A39.
Form	Lyophilized
Concentration	Adding 0.2 ml of distilled water will yield a concentration of 500 ug/ml.
Purification	Immunogen affinity purified.
Suggested Dilutions	Western blot, 0.25-0.5 ug/ml, Mouse

## Anti-SLC25A39 Antibody Picoband® (A14204-1) Images



Western blot analysis of SLC25A39 using anti-SLC25A39 antibody (A14204-1). Electrophoresis was performed on a 10% SDS-PAGE gel at 80V (Stacking gel) / 120V (Resolving gel) for 2 hours. The sample well of each lane was loaded with 30 ug of sample under reducing conditions. Lane 1: mouse kidney tissue lysates. After electrophoresis, proteins were transferred to a nitrocellulose membrane at 150 mA for 50-90 minutes. Blocked the membrane with 5% non-fat milk/TBS for 1.5 hour at RT. The membrane was incubated with rabbit anti-SLC25A39 antigen affinity purified polyclonal antibody (A14204-1) at 0.5 ug/mL overnight at 4°C, then washed with TBS-0.1% Tween 3 times with 5 minutes each and probed with a goat anti-rabbit IgG-HRP secondary antibody at a dilution of 1:5000 for 1.5 hour at RT. The signal is developed using an ECL Plus Western Blotting Substrate (Catalog # AR1196-200) with Tanon 5200 system. A specific band was detected for SLC25A39 at approximately 39 kDa. The expected band size for SLC25A39 is at 39 kDa.

### Submit a product review to Biocompare.com

Submit a review of this product to Biocompare.com to receive a \$20 Amazon.com giftcard! Your reviews help your fellow scientists make the right decisions. Thank you for your contribution.



Anti-SLC25A39 Antibody

For Research Use Only. Not for use in diagnostic procedures.