

Anti-RHBDD3 Antibody

Catalog Number: A14223

About RHBDD3

The Rhomboid family of proteins is made up of several widely conserved polytopic membrane serine proteases that play roles in growth and development. RHBDD3 was initially identified as a novel pituitary tumor apoptosis gene (PTAG) whose expression was reduced in certain pituitary adenomas. Overexpression of RHBDD3 in AtT20 cells showed an increase in apoptotic activity and caspase activation in response to bromocriptine, and apoptosis-inducing dopamine D2 analog, suggesting that reactivation of RHBDD3 in tumors may be a therapeutically useful tool. Later experiments also showed that RHBDD3 expression is also reduced in several primary colorectal tumors, indicating that loss of RHBDD3 contributes to a blunted apoptotic response and probably predisposes cells towards malignant transformation.

Overview

Product Name	Anti-RHBDD3 Antibody
Reactive Species	Human, Mouse, Rat
Description	Boster Bio Anti-RHBDD3 Antibody (Catalog # A14223). Tested in ELISA, WB, IF applications. This antibody reacts with Human, Mouse, Rat.
Application	ELISA, IF, WB
Clonality	Polyclonal
Formulation	RHBDD3 Antibody is supplied in PBS containing 0.02% sodium azide.
Storage Instructions	RHBDD3 antibody can be stored at 4°C for three months and -20°C, stable for up to one year. Avoid repeated freeze-thaw cycles. Antibodies should not be exposed to prolonged high temperatures.
Host	Rabbit
Uniprot ID	Q9Y3P4

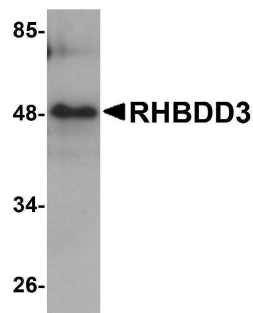
Technical Details

Immunogen	RHBDD3 antibody was raised against a 13 amino acid synthetic peptide from near the center of human RHBDD3. The immunogen is located within amino acids 170 - 220 of RHBDD3.
Predicted Reactive Species	Bovine, Mouse, Rat
Isotype	IgG
Form	Liquid
Concentration	1 mg/mL
Purification	RHBDD3 Antibody is affinity chromatography purified via peptide column.

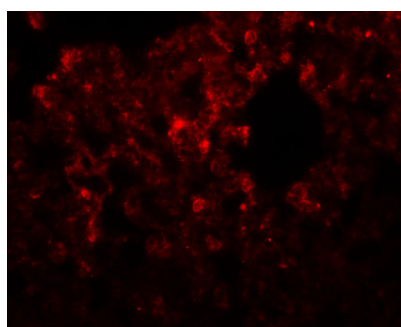
Suggested Dilutions

RHBDD3 antibody can be used for detection of RHBDD3 by Western blot at 1 ug/mL. For immunofluorescence start at 20 ug/mL.
Antibody validated: Western Blot in rat samples and Immunofluorescence in rat samples. All other applications and species not yet tested. Optimal dilutions for each application should be determined by the researcher.

Anti-RHBDD3 Antibody (A14223) Images



Western blot analysis of RHBDD3 in rat lung tissue lysate with RHBDD3 antibody at 1 ug/mL.



Immunofluorescence of RHBDD3 in rat lung tissue with RHBDD3 antibody at 20 ug/mL.

Submit a product review to [Biocompare.com](https://www.biocompare.com)

Submit a review of this product to [Biocompare.com](https://www.biocompare.com) to receive a \$20 Amazon.com giftcard! Your reviews help your fellow scientists make the right decisions. Thank you for your contribution.



Anti-RHBDD3 Antibody

For Research Use Only. Not for use in diagnostic procedures.