

Anti-Chondroadherin-like protein CHADL Antibody

Catalog Number: A14235

About CHADL

The Chondroadherin-like (CHADL) protein, also known as SLRR4B, is homologous to the Chondroadherin protein and is expressed cartilaginous tissues (1). Like Chondroadherin, CHADL belongs to the small leucine-rich proteoglycan (SLRP) family and class IV subfamily and plays a significant role in the regulation of chondrocyte growth and proliferation (1,2). CHADL is thought to play a negative regulatory role in collagen fibrillogenesis and chondrocyte differentiation (1).

Overview

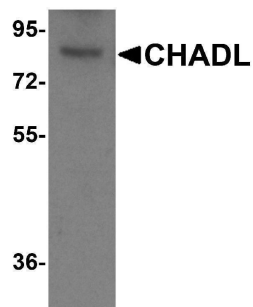
Product Name	Anti-Chondroadherin-like protein CHADL Antibody
Reactive Species	Human, Mouse, Rat
Description	Boster Bio Anti-Chondroadherin-like protein CHADL Antibody (Catalog # A14235). Tested in ELISA, WB, IHC, IF applications. This antibody reacts with Human, Mouse, Rat.
Application	ELISA, IF, IHC, WB
Clonality	Polyclonal
Formulation	CHADL Antibody is supplied in PBS containing 0.02% sodium azide.
Storage Instructions	CHADL antibody can be stored at 4°C for three months and -20°C, stable for up to one year.
Host	Rabbit
Uniprot ID	Q6NUI6

Technical Details

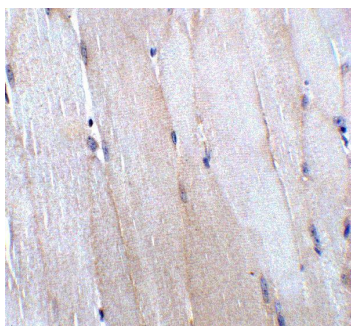
Immunogen	CHADL antibody was raised against a 19 amino acid peptide from near the carboxy terminus of human CHADL. The immunogen is located within the last 50 amino acids of CHADL.
Predicted Reactive Species	Bovine, Mouse, Rat
Cross Reactivity	CHADL antibody is human, mouse and rat reactive. CHADL antibody is predicted to not cross-react with Chondroadherin protein.
Isotype	IgG
Form	Liquid
Concentration	1 mg/mL
Purification	CHADL Antibody is affinity chromatography purified via peptide column.
Suggested Dilutions	CHADL antibody can be used for the detection of CHADL by Western blot at 1 - 2 ug/mL. Antibody

can also be used for Immunohistochemistry starting at 5 ug/mL.
Antibody validated: Western Blot in mouse samples; Immunohistochemistry in mouse samples and Immunofluorescence in mouse samples. All other applications and species not yet tested. Optimal dilutions for each application should be determined by the researcher.

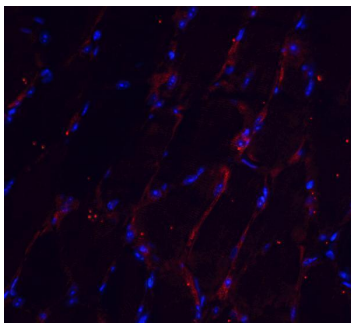
Anti-Chondroadherin-like protein CHADL Antibody (A14235) Images



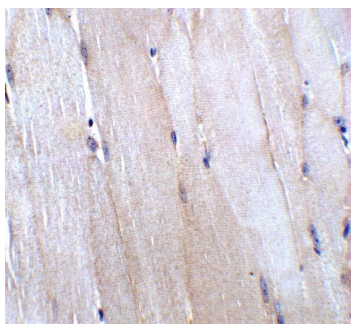
Western blot analysis of CHADL in mouse kidney tissue lysate with CHADL antibody at (A) 1 and (B) 2 ug/ml.



Immunohistochemistry of CHADL in mouse skeletal muscle tissue with CHADL antibody at 5 ug/mL.



Immunofluorescence of CHADL in mouse skeletal muscle tissue with CHADL antibody at 20 ug/mL. Red: CHADL Antibody (A14235) Blue: DAPI staining



Immunohistochemistry of CHADL in mouse skeletal muscle tissue with CHADL antibody at 5 ug/mL.

Submit a product review to [Biocompare.com](https://www.biocompare.com)

Submit a review of this product to [Biocompare.com](https://www.biocompare.com) to receive a \$20 Amazon.com giftcard! Your reviews help your fellow scientists make the right decisions. Thank you for your contribution.



Anti-Chondroadherin-like protein CHADL Antibody

For Research Use Only. Not for use in diagnostic procedures.