

## Anti-Collagen alpha-1(XXVI) chain COL26A1 Antibody

Catalog Number: A14262

### About COL26A1

May facilitate the release of atrial natriuretic peptide by cardiomyocytes and hence play a role in the regulation of arterial pressure By similarity.

The MGC Project Team, Genome Res. 14:2121-2127(2004) [PubMed: 15489334].  
Sjoeblom T., Science 314:268-274(2006) [PubMed: 16959974].

### Overview

Product Name	Anti-Collagen alpha-1(XXVI) chain COL26A1 Antibody
Reactive Species	Human, Rat
Description	Boster Bio Anti-Collagen alpha-1 (XXVI) chain COL26A1 Antibody catalog # A14262. Tested in WB applications. This antibody reacts with Human, Rat.
Application	WB
Clonality	Polyclonal
Formulation	Rabbit IgG, 1mg/ml in PBS with 0.02% sodium azide, 50% glycerol, pH7.2
Storage Instructions	Store at -20°C for one year. For short term storage and frequent use, store at 4°C for up to one month. Avoid repeated freeze-thaw cycles.
Host	Rabbit
Uniprot ID	Q96A83

### Technical Details

Immunogen	Synthesized peptide derived from human NF-E4
Predicted Reactive Species	Chimpanzee, Drosophila, Macaque
Isotype	IgG
Form	Liquid
Concentration	1 mg/ml
Purification	The antibody was affinity-purified from rabbit antiserum by affinity-chromatography using epitope-specific immunogen and the purity is > 95% (by SDS-PAGE).
Suggested Dilutions	Dilute the sample so that the expected range of concentrations fall within the detection range of this kit. If the expected range of concentration is unknown, a pilot test should be conducted to decide the

optimal dilution ratio for your samples.  
Some PubMed article(s) citing the expression level of this target are as follows:  
Boster Bio's internal QC testing used:  
WB: 1:500-1:1000

## Anti-Collagen alpha-1(XXVI) chain COL26A1 Antibody (A14262) Images

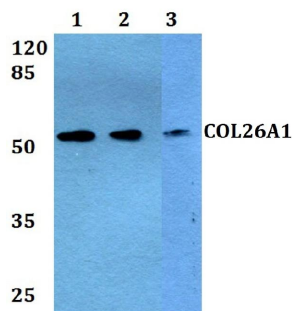


Figure 1. Western blotting validation for Anti-Collagen alpha-1(XXVI) chain COL26A1 Antibody A14262

Western blot (WB) analysis of COL26A1 polyclonal antibody at 1:500 dilution

Lane1:Hela whole cell lysate

Lane2:H9C2 whole cell lysate

Lane3:PC12 whole cell lysate

Electrophoresis was performed on a SDS-PAGE gel. To determine SDS-PAGE gel concentration

### Submit a product review to Biocompare.com

Submit a review of this product to Biocompare.com to receive a \$20 Amazon.com giftcard! Your reviews help your fellow scientists make the right decisions. Thank you for your contribution.



Anti-Collagen alpha-1(XXVI) chain COL26A1 Antibody