

Anti-SYNPO2L Antibody Picoband®

Catalog Number: A14266-1

About SYNPO2L

SYNPO2L belongs to the synaptopodin family and is an actin-associated protein that may play a role in modulating actin-based shape. SYNPO2L is involved in the positive regulation of Rho protein signal transduction and the positive regulation of stress fiber assembly. Loss-of-function variants in the SYNPO2L gene are associated with atrial fibrillation

Overview

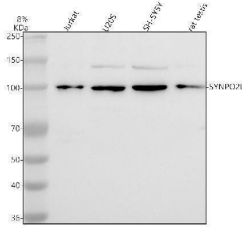
Product Name	Anti-SYNPO2L Antibody Picoband®
Reactive Species	Human, Rat
Description	Boster Bio Anti-SYNPO2L Antibody Picoband® catalog # A14266-1. Tested in WB, FCM, ELISA applications. This antibody reacts with Human, Rat. The brand Picoband indicates this is a premium antibody that guarantees superior quality, high affinity, and strong signals with minimal background in Western blot applications. Only our best-performing antibodies are designated as Picoband, ensuring unmatched performance.
Application	ELISA, Flow Cytometry, WB
Clonality	Polyclonal
Formulation	Each vial contains 4 mg Trehalose, 0.9 mg NaCl, 0.2 mg Na ₂ HPO ₄ .
Storage Instructions	At -20°C for one year from date of receipt. After reconstitution, at 4°C for one month. It can also be aliquotted and stored frozen at -20°C for six months. Avoid repeated freezing and thawing.
Host	Rabbit
Uniprot ID	Q9H987

Technical Details

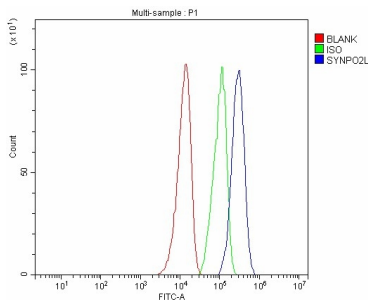
Immunogen	E.coli-derived human SYNPO2L recombinant protein (Position: H66-E923). Human SYNPO2L shares 87.9% amino acid (aa) sequence identity with mouse SYNPO2L.
Recommended Detection Systems	Boster recommends Enhanced Chemiluminescent Kit with anti-Rabbit IgG (EK1002) for Western blot.
Form	Lyophilized
Concentration	Adding 0.2 ml of distilled water will yield a concentration of 500 ug/ml.
Purification	Immunogen affinity purified.
Suggested Dilutions	Western blot, 0.25-0.5 ug/ml, Human, Rat Flow Cytometry (Fixed), 1-3 ug/1x10 ⁶ cells, Human

ELISA, 0.1-0.5 ug/ml, -

Anti-SYNPO2L Antibody Picoband® (A14266-1) Images



Western blot analysis of SYNPO2L using anti-SYNPO2L antibody (A14266-1). Electrophoresis was performed on a 5-20% SDS-PAGE gel at 70V (Stacking gel) / 90V (Resolving gel) for 2-3 hours. The sample well of each lane was loaded with 30 ug of sample under reducing conditions. Lane 1: human Jurkat whole cell lysates, Lane 2: human U2OS whole cell lysates, Lane 3: human SH-SY5Y whole cell lysates, Lane 4: rat testis tissue lysates. After electrophoresis, proteins were transferred to a nitrocellulose membrane at 150 mA for 50-90 minutes. Blocked the membrane with 5% non-fat milk/TBS for 1.5 hour at RT. The membrane was incubated with rabbit anti-SYNPO2L antigen affinity purified polyclonal antibody (Catalog # A14266-1) at 0.5 ug/mL overnight at 4°C, then washed with TBS-0.1%Tween 3 times with 5 minutes each and probed with a goat anti-rabbit IgG-HRP secondary antibody at a dilution of 1:5000 for 1.5 hour at RT. The signal is developed using an Enhanced Chemiluminescent detection (ECL) kit (Catalog # EK1002) with Tanon 5200 system. A specific band was detected for SYNPO2L at approximately 102 kDa. The expected band size for SYNPO2L is at 102 kDa.



Flow Cytometry analysis of SH-SY5Y cells using anti-SYNPO2L antibody (A14266-1). Overlay histogram showing SH-SY5Y cells stained with A14266-1 (Blue line). To facilitate intracellular staining, cells were fixed with 4% paraformaldehyde and permeabilized with permeabilization buffer. The cells were blocked with 10% normal goat serum. And then incubated with rabbit anti-SYNPO2L Antibody (A14266-1, 1 ug/1x10⁶ cells) for 30 min at 20°C. DyLight®488 conjugated goat anti-rabbit IgG (BA1127, 5-10 ug/1x10⁶ cells) was used as secondary antibody for 30 minutes at 20°C. Isotype control antibody (Green line) was rabbit IgG (1 ug/1x10⁶) used under the same conditions. Unlabelled sample without incubation with primary antibody and secondary antibody (Red line) was used as a blank control.

Submit a product review to Biocompare.com

Submit a review of this product to Biocompare.com to receive a \$20 Amazon.com giftcard! Your reviews help your fellow scientists make the right decisions. Thank you for your contribution.



Anti-SYNPO2L Antibody

For Research Use Only. Not for use in diagnostic procedures.