

Anti-MettL7A Antibody

Catalog Number: A14279-1

About METTL7A

MettL7A belongs to the methyltransferase superfamily. It is a probable methyltransferase. Methyltransferase is a type of transferase enzyme which transfers a methyl group from a donor to an acceptor. Often methylation occurs on nucleic bases in DNA or amino acids in protein structures. DNA methylation is often utilized to silence and regulate genes without changing the original DNA sequence. DNA methylation may be necessary for normal growth from embryonic stages in mammals. When mutant embryonic stem cells lacking the murine DNA methyltransferase gene were introduced to a germline of mice they caused a recessive lethal phenotype. Methylation may also be linked to cancer development as methylation of tumor suppressor genes promotes tumorigenesis and metastasis.

Overview

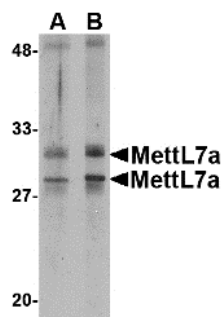
Product Name	Anti-MettL7A Antibody
Reactive Species	Human, Mouse
Description	Boster Bio Anti-MettL7A Antibody (Catalog # A14279-1). Tested in ELISA, WB, ICC, IF applications. This antibody reacts with Human, Mouse.
Application	ELISA, IF, ICC, WB
Clonality	Polyclonal
Formulation	MettL7A Antibody is supplied in PBS containing 0.02% sodium azide.
Storage Instructions	Antibody can be stored at 4°C up to one year. Antibodies should not be exposed to prolonged high temperatures.
Host	Rabbit
Uniprot ID	Q9H8H3

Technical Details

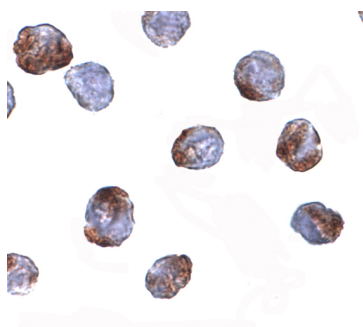
Immunogen	MettL7A antibody was raised against a 13 amino acid synthetic peptide near the center of human MettL7A. The immunogen is located within amino acids 130 - 180 of MettL7A.
Predicted Reactive Species	Bovine, Mouse, Rat
Cross Reactivity	At least two isoforms of MettL7A are known to exist. This antibody is predicted to not cross-react with MettL7B.
Isotype	IgG
Form	Liquid
Concentration	1 mg/mL

Purification	MettL7A Antibody is affinity chromatography purified via peptide column.
Suggested Dilutions	MettL7A antibody can be used for detection of MettL7A by Western blot at 2 ug/mL. Antibody can also be used for immunocytochemistry starting at 2 ug/mL. For immunofluorescence start at 2 ug/mL. Antibody validated: Western Blot in human samples and Immunocytochemistry in human samples. All other applications and species not yet tested. Optimal dilutions for each application should be determined by the researcher.

Anti-MettL7A Antibody (A14279-1) Images



Western blot analysis of MettL7A in MCF cell lysate with MettL7A antibody at 2 ug/mL.



Immunocytochemistry of MettL7A in MCF7 cells with MettL7a antibody at 2 ug/mL.

Submit a product review to [Biocompare.com](https://www.biocompare.com)

Submit a review of this product to [Biocompare.com](https://www.biocompare.com) to receive a \$20 Amazon.com giftcard! Your reviews help your fellow scientists make the right decisions. Thank you for your contribution.



Anti-MettL7A Antibody

For Research Use Only. Not for use in diagnostic procedures.