

Anti-SRE-ZBP ZSCAN26 Antibody

Catalog Number: A14317

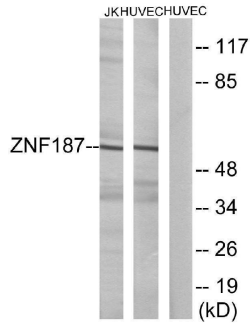
Overview

| | |
|----------------------|---|
| Product Name | Anti-SRE-ZBP ZSCAN26 Antibody |
| Reactive Species | Human, Mouse |
| Description | Boster Bio Anti-SRE-ZBP ZSCAN26 Antibody catalog # A14317. Tested in WB, IF, ELISA applications. This antibody reacts with Human, Mouse. |
| Application | ELISA, IF, WB |
| Clonality | Polyclonal |
| Formulation | Liquid in PBS containing 50% glycerol, 0.5% stabilizing protein and 0.02% sodium azide. This antibody is supplied in a stabilized formulation. Compatibility with conjugation reactions depends on the chemistry of the conjugation method used. For conjugation methods that are not compatible with the stabilizing components present in this formulation, a carrier-free antibody format is required. |
| Storage Instructions | Store at -20°C for one year. For short term storage and frequent use, store at 4°C for up to one month. Avoid repeated freeze-thaw cycles. |
| Host | Rabbit |
| Uniprot ID | Q16670 |

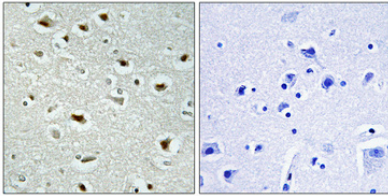
Technical Details

| | |
|---------------------|---|
| Immunogen | The antiserum was produced against synthesized peptide derived from human ZNF187. AA range:51-100 |
| Isotype | IgG |
| Form | Liquid |
| Concentration | 1 mg/ml |
| Purification | Immunogen affinity purified |
| Suggested Dilutions | WB 1:500-1:2000 IF 1:200-1:1000 ELISA 1:5000 |

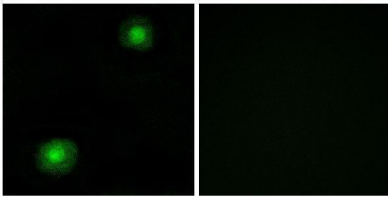
Anti-SRE-ZBP ZSCAN26 Antibody (A14317) Images



Western blot analysis of lysates from Jurkat and HUVEC cells, using ZNF187 Antibody. The lane on the right is blocked with the synthesized peptide.



Immunohistochemical analysis of paraffin-embedded Human brain. Antibody was diluted at 1:100 (4° overnight). High-pressure and temperature Tris-EDTA, pH8.0 was used for antigen retrieval. Negative control (right) obtained from antibody was pre-absorbed by immunogen peptide.



Immunofluorescence analysis of A549 cells, using ZNF187 Antibody. The picture on the right is blocked with the synthesized peptide.

Submit a product review to [Biocompare.com](https://www.biocompare.com)

Submit a review of this product to [Biocompare.com](https://www.biocompare.com) to receive a \$20 Amazon.com giftcard! Your reviews help your fellow scientists make the right decisions. Thank you for your contribution.



Anti-SRE-ZBP ZSCAN26 Antibody

For Research Use Only. Not for use in diagnostic procedures.