

## Anti-ZF21 ZFYVE21 Antibody

Catalog Number: A14319

### About ZFYVE21

ZF21 was initially identified as protein that could bind to the cytoplasmic tail of MT1-MMP (Membrane-type 1 matrix metalloproteinase), a potent invasion-promoting protease. ZF21 is a member of a protein family characterized by the presence of a phosphatidylinositol 3-phosphate-binding FYVE domain and regulates focal adhesions (FAs) and cell movement. Knockdown of ZF21 expression resulted in a delay of FA disassembly following induction of synchronous disassembly of FAs by nocodazole treatment, suggesting that ZF21 is involved in FA disassembly. ZF21 contains a noncanonical pleckstrin homology domain that is a possible therapeutic target to treat metastatic cancer.

### Overview

Product Name	Anti-ZF21 ZFYVE21 Antibody
Reactive Species	Human, Mouse, Rat
Description	Boster Bio Anti-ZF21 ZFYVE21 Antibody (Catalog # A14319). Tested in ELISA, WB, IF applications. This antibody reacts with Human, Mouse, Rat.
Application	ELISA, IF, WB
Clonality	Polyclonal
Formulation	ZF21 Antibody is supplied in PBS containing 0.02% sodium azide.
Storage Instructions	ZF21 antibody can be stored at 4°C for three months and -20°C, stable for up to one year. Avoid repeated freeze-thaw cycles. Antibodies should not be exposed to prolonged high temperatures.
Host	Rabbit
Uniprot ID	Q9BQ24

### Technical Details

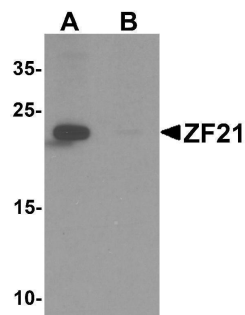
Immunogen	ZF21 antibody was raised against a 15 amino acid synthetic peptide near the amino terminus of human ZF21. The immunogen is located within the first 50 amino acids of ZF21.
Predicted Reactive Species	Bovine
Cross Reactivity	At least two isoforms of ZF21 are known to exist; this antibody will detect both isoforms.
Isotype	IgG
Form	Liquid
Concentration	1 mg/mL
Purification	ZF21 Antibody is affinity chromatography purified via peptide column.

Suggested Dilutions

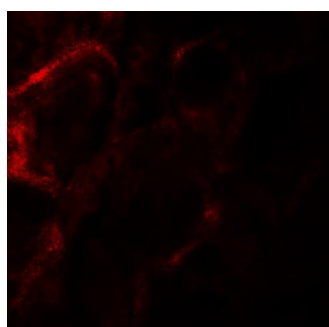
ZF21 antibody can be used for detection of ZF21 by Western blot at 1 ug/mL. For immunofluorescence start at 20 ug/mL.

Antibody validated: Western Blot in mouse samples and Immunofluorescence in human samples. All other applications and species not yet tested. Optimal dilutions for each application should be determined by the researcher.

## Anti-ZF21 ZFYVE21 Antibody (A14319) Images



Western blot analysis of ZF21 in 3T3 cell tissue lysate with ZF21 antibody at 1 ug/ml in (A) the absence and (B) the presence of blocking peptide.



Immunofluorescence of ZF21 in human kidney tissue with ZF21 antibody at 20 ug/mL.

### Submit a product review to [Biocompare.com](https://www.biocompare.com)

Submit a review of this product to [Biocompare.com](https://www.biocompare.com) to receive a \$20 Amazon.com giftcard! Your reviews help your fellow scientists make the right decisions. Thank you for your contribution.



Anti-ZF21 ZFYVE21 Antibody

For Research Use Only. Not for use in diagnostic procedures.