

Anti-SIGLEC15 Antibody

Catalog Number: A14323

About SIGLEC15

Siglecs are vertebrate cell-surface lectins that recognize sialylated glycans and are involved in many physiological processes, such as glycoprotein turnover, cellular trafficking, and pathogen recognition. Most Siglecs are expressed on cells of the immune system. SIGLEC15 is a type-I transmembrane protein consisting of two immunoglobulin (Ig)-like domains, a transmembrane domain containing a lysine residue, and a short cytoplasmic tail. SIGLEC15 can interact with the activating adaptor molecules DAP12/10. Its activating signaling potential and unique preference for glycan recognition implies that SIGLEC15 may be involved in the immune surveillance of tumors and probably plays a conserved, regulatory role in the immune system of vertebrates.

Overview

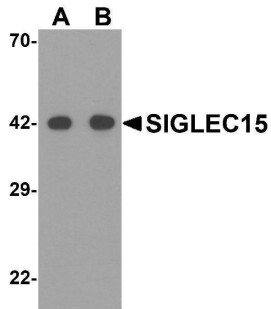
Product Name	Anti-SIGLEC15 Antibody
Reactive Species	Human, Mouse, Rat
Description	Boster Bio Anti-SIGLEC15 Antibody (Catalog # A14323). Tested in ELISA, WB, IF applications. This antibody reacts with Human, Mouse, Rat.
Application	ELISA, IF, WB
Clonality	Polyclonal
Formulation	SIGLEC15 Antibody is supplied in PBS containing 0.02% sodium azide.
Storage Instructions	SIGLEC15 antibody can be stored at 4°C for three months and -20°C, stable for up to one year. Avoid repeated freeze-thaw cycles. Antibodies should not be exposed to prolonged high temperatures.
Host	Rabbit
Uniprot ID	Q6ZMC9

Technical Details

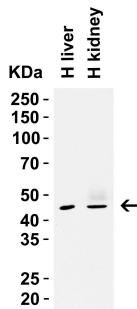
Immunogen	SIGLEC15 antibody was raised against a 15 amino acid synthetic peptide near the amino terminus of human SIGLEC15. The immunogen is located within amino acids 50 - 100 of SIGLEC15.
Predicted Reactive Species	Bovine
Cross Reactivity	SIGLEC15 antibody is predicted to not cross-react with other SIGLEC family members.
Isotype	IgG
Form	Liquid
Concentration	1 mg/mL

Purification	SIGLEC15 Antibody is affinity chromatography purified via peptide column.
Suggested Dilutions	WB: 1-4 ug/mL; IHC-P/IF: 5-20 ug/mL. Antibody validated: Western Blot in human, mouse and rat samples; Immunofluorescence in the human, mouse and rat samples. All other applications and species not yet tested.

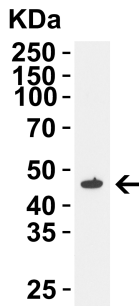
Anti-SIGLEC15 Antibody (A14323) Images



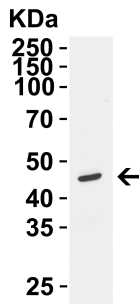
Western blot analysis of SIGLEC15 in human kidney tissue lysate with SIGLEC15 antibody at (A) 1 and (B) 2 ug/mL.



WB Validation in Human Tissues Loading: 15 ug of lysate
Antibodies: SIGLEC15, A14323, 2 u g/mL , 1 h incubation at RT in 5% NFDm/TBST. Secondary: Goat Anti-Rabbit IgG HRP conjugate at 1:10000 dilution.

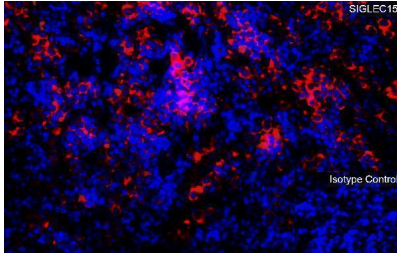
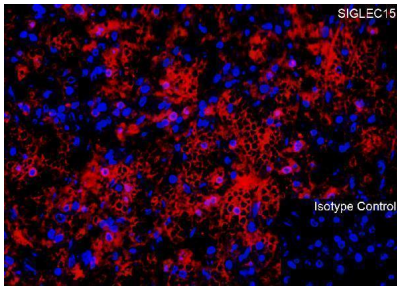


WB Validation in Mouse Kidney Loading: 15 ug of lysate
Antibodies: SIGLEC15, A14323, 2 u g/mL , 1 h incubation at RT in 5% NFDm/TBST. Secondary: Goat Anti-Rabbit IgG HRP conjugate at 1:10000

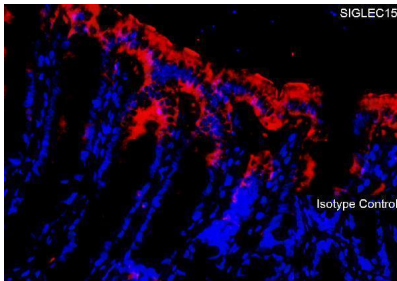


WB Validation in Rat Testis Loading: 15 ug of lysate
Antibodies: SIGLEC15, A14323, 2 ug/mL , 1 h incubation at RT in 5% NFDm/TBST. Secondary: Goat Anti-Rabbit IgG HRP conjugate at 1:10000 dilution.

Immunofluorescence Validation of SIGLEC15 in Human Spleen Immunofluorescent analysis of 4% paraformaldehyde-fixed human spleen tissue labeling SIGLEC15 with A14323 at 10 ug/mL, followed by goat anti-rabbit IgG secondary antibody at 1/500 dilution (red) and DAPI staining (blue).



Immunofluorescence Validation of SIGLEC15 in Mouse Spleen
Immunofluorescent analysis of 4% paraformaldehyde-fixed mouse spleen tissue labeling SIGLEC15 with A14323 at 20 ug/mL, followed by goat anti-rabbit IgG secondary antibody at 1/500 dilution (red) and DAPI staining (blue).



Immunofluorescence Validation of SIGLEC15 in Rat Small Intestine
Immunofluorescent analysis of 4% paraformaldehyde-fixed rat small intestine tissue labeling SIGLEC15 with A14323 at 10 ug/mL, followed by goat anti-rabbit IgG secondary antibody at 1/500 dilution (red) and DAPI staining (blue).

Submit a product review to Biocompare.com

Submit a review of this product to Biocompare.com to receive a \$20 Amazon.com giftcard! Your reviews help your fellow scientists make the right decisions. Thank you for your contribution.



Anti-SIGLEC15 Antibody

For Research Use Only. Not for use in diagnostic procedures.