

Anti-Casein Kinase I alpha /1L CSNK1A1L Antibody

Catalog Number: A14331-1

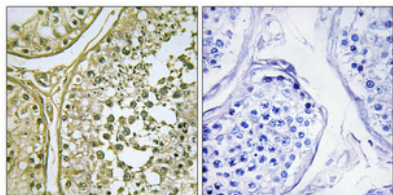
Overview

| | |
|----------------------|---|
| Product Name | Anti-Casein Kinase I alpha /1L CSNK1A1L Antibody |
| Reactive Species | Human, Mouse, Rat |
| Description | Boster Bio Anti-Casein Kinase I alpha /1L CSNK1A1L Antibody catalog # A14331-1. Tested in IHC, IF, WB, ELISA applications. This antibody reacts with Human, Mouse, Rat. |
| Application | ELISA, IF, IHC, WB |
| Clonality | Polyclonal |
| Formulation | Liquid in PBS containing 50% glycerol, 0.5% stabilizing protein and 0.02% sodium azide. This antibody is supplied in a stabilized formulation. Compatibility with conjugation reactions depends on the chemistry of the conjugation method used. For conjugation methods that are not compatible with the stabilizing components present in this formulation, a carrier-free antibody format is required. |
| Storage Instructions | Store at -20°C for one year. For short term storage and frequent use, store at 4°C for up to one month. Avoid repeated freeze-thaw cycles. |
| Host | Rabbit |
| Uniprot ID | Q8N752 |

Technical Details

| | |
|---------------------|---|
| Immunogen | The antiserum was produced against synthesized peptide derived from human CKI-alpha1/L. AA range:141-190 |
| Isotype | IgG |
| Form | Liquid |
| Concentration | 1 mg/ml |
| Purification | The antibody was affinity-purified from rabbit antiserum by affinity-chromatography using epitope-specific immunogen. |
| Suggested Dilutions | WB 1:500-2000 IHC 1:100-1:300 IF 1:200-1:1000 ELISA 1:20000 |

Anti-Casein Kinase I alpha /1L CSNK1A1L Antibody (A14331-1) Images



Immunohistochemistry validation of CSNK1A1L using Anti-Casein Kinase I alpha /1L CSNK1A1L Antibody (A14331-1). Immunohistochemical analysis of paraffin-embedded Human testis. Antibody was diluted at 1:100 (4°C)

Submit a product review to [Biocompare.com](https://www.biocompare.com)

Submit a review of this product to [Biocompare.com](https://www.biocompare.com) to receive a \$20 Amazon.com giftcard! Your reviews help your fellow scientists make the right decisions. Thank you for your contribution.



Anti-Casein Kinase I alpha /1L CSNK1A1L Antibody

For Research Use Only. Not for use in diagnostic procedures.