

Anti-TWA1 GID8 Antibody

Catalog Number: A14387

About GID8

TWA1 was identified through a two hybrid-associated protein screen with RanBPM. TWA1 is well conserved through evolution and is localized within the nucleus. It interacts with RanBP9 and comprises a protein complex with RanBPM and Muskelein. TWA1 was found to possess the LisH-CTLH motif which is detected in proteins involved in microtubule dynamics, cell migration, nucleokinesis and chromosome segregation. These functions overlap with functions suggested for the RanGTPase cycle. Recent findings suggested that there is an as yet uncovered function of the RanGTPase cycle.

Overview

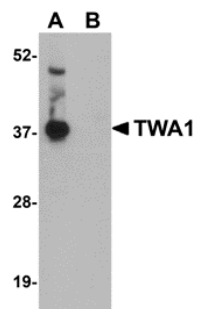
Product Name	Anti-TWA1 GID8 Antibody
Reactive Species	Human, Mouse, Rat
Description	Boster Bio Anti-TWA1 GID8 Antibody (Catalog # A14387). Tested in ELISA, WB, IHC-P, IF applications. This antibody reacts with Human, Mouse, Rat.
Application	ELISA, IF, IHC-P, WB
Clonality	Polyclonal
Formulation	TWA1 Antibody is supplied in PBS containing 0.02% sodium azide.
Storage Instructions	TWA1 antibody can be stored at 4°C for three months and -20°C, stable for up to one year. Avoid repeated freeze-thaw cycles. Antibodies should not be exposed to prolonged high temperatures.
Host	Rabbit
Uniprot ID	Q9NWU2

Technical Details

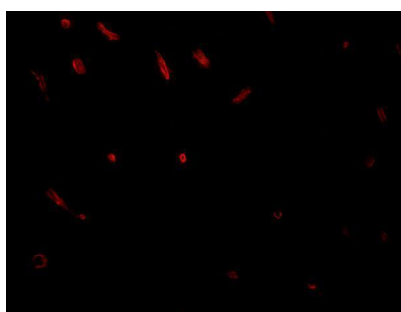
Immunogen	TWA1 antibody was raised against a 17 amino acid synthetic peptide near the carboxy terminus of human TWA1. The immunogen is located within the last 50 amino acids of TWA1.
Predicted Reactive Species	Bovine, Chicken
Isotype	IgG
Form	Liquid
Concentration	1 mg/mL
Purification	TWA1 Antibody is affinity chromatography purified via peptide column.
Suggested Dilutions	TWA1 antibody can be used for detection of TWA1 by Western blot at 1 ug/mL. Antibody can also be used for immunohistochemistry starting at 2.5 ug/mL. For immunofluorescence start at 20 ug/mL.

Antibody validated: Western Blot in human samples; Immunohistochemistry in rat samples and Immunofluorescence in rat samples. All other applications and species not yet tested. Optimal dilutions for each application should be determined by the researcher.

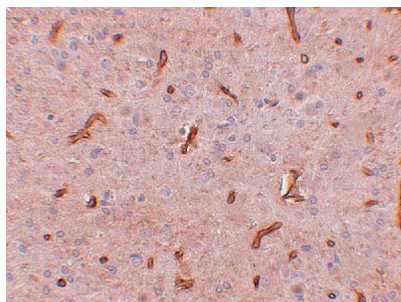
Anti-TWA1 GID8 Antibody (A14387) Images



Western blot analysis of TWA1 in human brain tissue lysate with TWA1 antibody at 1 ug/mL in (A) the absence and (B) the presence of blocking peptide.



Immunofluorescence of TWA1 in rat brain tissue with TWA1 antibody at 20 ug/mL.



Immunohistochemistry of TWA1 in rat brain tissue with TWA1 antibody at 2.5 ug/mL.

Submit a product review to [Biocompare.com](https://www.biocompare.com)

Submit a review of this product to [Biocompare.com](https://www.biocompare.com) to receive a \$20 Amazon.com giftcard! Your reviews help your fellow scientists make the right decisions. Thank you for your contribution.



Anti-TWA1 GID8 Antibody

For Research Use Only. Not for use in diagnostic procedures.