

## Anti-PIWI-L3 Antibody

Catalog Number: A14448

### About PIWIL3

PIWI-L3 is a member of the PIWI subfamily of Argonaute proteins, evolutionarily conserved proteins containing both PAZ and Piwi motifs that are crucial for the biogenesis and function of small non-coding RNAs and play important roles in stem cell self-renewal, RNA silencing, and translational regulation in diverse organisms. Recent studies have shown that overexpression of PIWI-L3 (as well as other PIWI-like proteins) are potential biomarkers for astrocytic glioma, meningioma, and other cancers.

### Overview

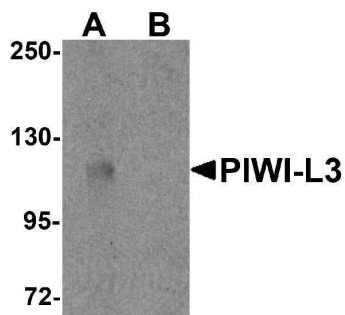
Product Name	Anti-PIWI-L3 Antibody
Reactive Species	Human, Mouse, Rat
Description	Boster Bio Anti-PIWI-L3 Antibody (Catalog # A14448). Tested in ELISA, WB, IF applications. This antibody reacts with Human, Mouse, Rat.
Application	ELISA, IF, WB
Clonality	Polyclonal
Formulation	PIWI-L3 Antibody is supplied in PBS containing 0.02% sodium azide.
Storage Instructions	PIWI-L3 antibody can be stored at 4°C for three months and -20°C, stable for up to one year. Avoid repeated freeze-thaw cycles. Antibodies should not be exposed to prolonged high temperatures.
Host	Rabbit
Uniprot ID	Q7Z3Z3

### Technical Details

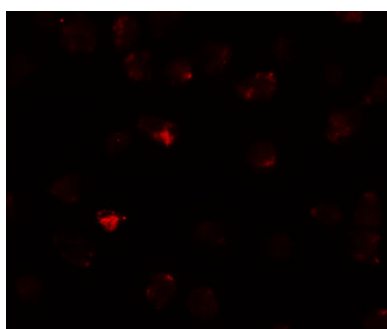
Immunogen	PIWI-L3 antibody was raised against an 18 amino acid synthetic peptide near the amino terminus of human PIWI-L3. The immunogen is located within amino acids 130 - 180 of PIWI-L3.
Predicted Reactive Species	Chicken, Pig
Isotype	IgG
Form	Liquid
Concentration	1 mg/mL
Purification	PIWI-L3 Antibody is affinity chromatography purified via peptide column.
Suggested Dilutions	PIWI-L3 antibody can be used for detection of PIWI-L3 by Western blot at 1 ug/mL. Antibody can also be used for immunofluorescence starting at 20 ug/mL. For immunofluorescence start at 20 ug/mL.

Antibody validated: Western Blot in mouse samples and Immunofluorescence in mouse samples. All other applications and species not yet tested. Optimal dilutions for each application should be determined by the researcher.

## Anti-PIWI-L3 Antibody (A14448) Images



Western blot analysis of PIWI-L3 in 3T3 cell lysate with PIWI-L3 antibody at 1 ug/mL in (A) the absence and (B) the presence of blocking peptide.



Immunofluorescence of PIWI-L3 in 3T3 cells with PIWI-L3 antibody at 20 ug/mL.

### Submit a product review to [Biocompare.com](https://www.biocompare.com)

Submit a review of this product to [Biocompare.com](https://www.biocompare.com) to receive a \$20 Amazon.com giftcard! Your reviews help your fellow scientists make the right decisions. Thank you for your contribution.



Anti-PIWI-L3 Antibody

For Research Use Only. Not for use in diagnostic procedures.