

## Anti-ZBTB6 Antibody

Catalog Number: A14485

### About ZBTB6

The ZBTB family of proteins is comprised of diverse zinc finger proteins that also contain a BTB (BR-C, ttk and bab) domain. ZBTB6, also known as ZNF482, is highly expressed in brain. While little is known about ZBTB6, other ZBTB proteins, such as ZBTB4 bind methylated DNA and repress transcription. Another ZBTB family member, ZBTB5, also acts as a transcriptional repressor, and can interact with co-repressor histone deacetylase complexes such as BCoR, NCoR, and SMRT via its POZ domain, suggesting that ZBTB6 may also act as a transcriptional repressor.

### Overview

Product Name	Anti-ZBTB6 Antibody
Reactive Species	Human, Mouse
Description	Boster Bio Anti-ZBTB6 Antibody (Catalog # A14485). Tested in ELISA, WB, ICC, IF applications. This antibody reacts with Human, Mouse.
Application	ELISA, IF, ICC, WB
Clonality	Polyclonal
Formulation	ZBTB6 Antibody is supplied in PBS containing 0.02% sodium azide.
Storage Instructions	ZBTB6 antibody can be stored at 4°C for three months and -20°C, stable for up to one year. Avoid repeated freeze-thaw cycles. Antibodies should not be exposed to prolonged high temperatures.
Host	Rabbit
Uniprot ID	Q15916

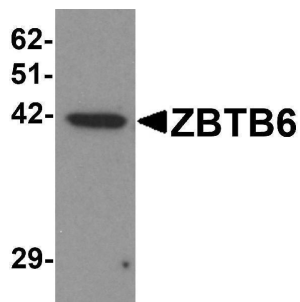
### Technical Details

Immunogen	ZBTB6 antibody was raised against a 15 amino acid synthetic peptide near the center of human ZBTB6. The immunogen is located within amino acids 180 - 230 of ZBTB6.
Predicted Reactive Species	Bovine
Cross Reactivity	At least two isoforms of ZBTB6 are known to exist; this antibody will only recognize the shorter isoform. This antibody is predicted to not cross-react with other ZBTB protein family members.
Isotype	IgG
Form	Liquid
Concentration	1 mg/mL
Purification	ZBTB6 Antibody is affinity chromatography purified via peptide column.

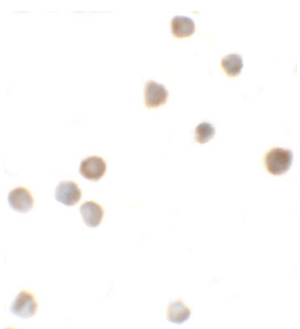
Suggested Dilutions

ZBTB6 antibody can be used for detection of ZBTB6 by Western blot at 1 ug/mL. Antibody can also be used for immunocytochemistry starting at 5 ug/mL. For immunofluorescence start at 5 ug/mL. Antibody validated: Western Blot in mouse samples; Immunocytochemistry in mouse samples and Immunofluorescence in mouse samples. All other applications and species not yet tested. Optimal dilutions for each application should be determined by the researcher.

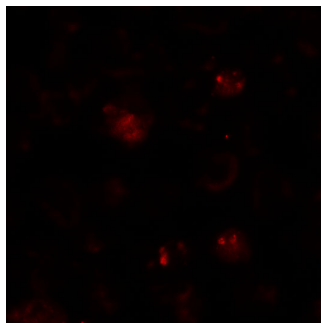
## Anti-ZBTB6 Antibody (A14485) Images



Western blot analysis of ZBTB6 in EL4 cell lysate with ZBTB6 antibody at 1 ug/mL.



Immunocytochemistry of ZBTB6 in EL4 cells with ZBTB6 antibody at 5 ug/mL.



Immunofluorescence of ZBTB6 in EL4 cells with ZBTB6 antibody at 20 ug/mL.

### Submit a product review to [Biocompare.com](https://www.biocompare.com)

Submit a review of this product to [Biocompare.com](https://www.biocompare.com) to receive a \$20 Amazon.com giftcard! Your reviews help your fellow scientists make the right decisions. Thank you for your contribution.



Anti-ZBTB6 Antibody

For Research Use Only. Not for use in diagnostic procedures.