

Anti-Histone H4 HIST1H4A Antibody

Catalog Number: A14495

About HIST1H4A

Histones are the main constituents of the protein part of chromosomes of eukaryotic cells. They are rich in the amino acids arginine and lysine and have been greatly conserved during evolution. Histones pack the DNA into tight masses of chromatin. Two core histones of each class H2A, H2B, H3 and H4 assemble and are wrapped by 146 base pairs of DNA to form one octameric nucleosome. Histones play a internal role in the regulation of transcription, DNA repair, DNA replication and chromosomal stability. These different functions are established via a complex set of post-translational modifications which either directly or indirectly alter chromatin structure and DNA accessibility to facilitate transcriptional activation or repression or other nuclear processes. Anti-Histone H4 pan Antibody is ideal for research in Chromatin Remodeling, Gene Expression and Epigenetics.

Overview

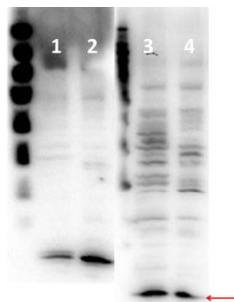
Product Name	Anti-Histone H4 HIST1H4A Antibody
Reactive Species	Human
Description	Boster Bio Anti-Histone H4 HIST1H4A Antibody (Catalog # A14495). Tested in Dot blot, WB applications. This antibody reacts with Human.
Application	ELISA, WB
Clonality	Polyclonal
Formulation	0.02 M Potassium Phosphate, 0.15 M Sodium Chloride, pH 7.2, 0.01% (w/v) Sodium Azide
Storage Instructions	Store vial at -20°C prior to opening. Aliquot contents and freeze at -20°C or below for extended storage. Avoid cycles of freezing and thawing. Centrifuge product if not completely clear after standing at room temperature. This product is stable for several weeks at 4°C as an undiluted liquid. Dilute only prior to immediate use. Expiration date is one (1) year from date of opening. (Ship on dry ice.)
Host	Rabbit
Uniprot ID	P62805

Technical Details

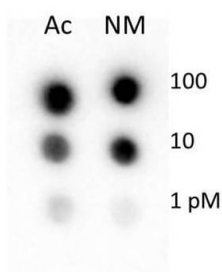
Immunogen	Anti-Histone H4 pan Antibody was produced in rabbits by repeated immunizations with a synthetic peptide containing a sequence from the N-terminal region of histone H4.
Predicted Reactive Species	Bovine, Canine, Equine, Pig, Rabbit
Isotype	IgG
Form	Liquid (sterile filtered)

Concentration	90 mg/mL by Refractometry
Purification	Anti-Histone H4 pan Antibody antiserum is directed against Histone H4. Cross-reactivity with other species was not tested.
Suggested Dilutions	ELISA: 1:20000 WB: 1:500-1:2000 Dot Blot: 1:1000 Anti-Histone H4 pan Antibody is tested for Western Blot and Dot Blots. This antibody is suitable for Chromatin Immunoprecipitation and ELISA. Expect a single band approximately 11.3 kDa in size corresponding to H4 by western blot in the appropriate tissue or cell lysate. Specific conditions for reactivity should be optimized by the end user.

Anti-Histone H4 HIST1H4A Antibody (A14495) Images



Western Blot of Rabbit anti-Histone H4 antibody. Lane 1: HeLa Whole Cell Lysate . Lane 2: HeLa Nuclear Extract . Lane 3: HeLa Whole Cell Lysate . Lane 4: HeLa Nuclear Extract . Load: 15 µg per lane. Primary antibody: Lanes 1-2: Histone H3 K18Ac, Lanes 3-4: Histone H4 antibody at 1:500 for overnight at 4°C. Secondary antibody: HRP rabbit secondary antibody at 1:40,000 for 45 min at RT. Block: overnight at 4°C. Predicted/Observed size: ~15.4kDa for Histone H3, and 11.3kDa for Histone H4.



Dot Blot of Rabbit Histone H4 Antibody. Lane 1: AC. Lane 2: NM. Load: 100, 10, 1 picomoles of peptide. Primary antibody: Histone H4 antibody at 1:1000 for 45 min at 4°C. Secondary antibody: Gt-anti-Rb IgG HRP secondary antibody at 1:10,000 for 45 min at RT. Block: 5% BLOTTO overnight at 4°C.

Submit a product review to [Biocompare.com](https://www.biocompare.com)

Submit a review of this product to [Biocompare.com](https://www.biocompare.com) to receive a \$20 Amazon.com giftcard! Your reviews help your fellow scientists make the right decisions. Thank you for your contribution.



Anti-Histone H4 HIST1H4A Antibody

For Research Use Only. Not for use in diagnostic procedures.