

Anti-GPR171 Antibody

Catalog Number: A14498-2

About GPR171

The cystatin superfamily encompasses proteins that contain multiple cystatin-like sequences. Some of the members are active cysteine protease inhibitors, while others have lost or perhaps never acquired this inhibitory activity. There are three inhibitory families in the superfamily, including the type 1 cystatins (stefins), type 2 cystatins and the kininogens. The type 2 cystatin proteins are a class of cysteine proteinase inhibitors found in a variety of human fluids and secretions. The cystatin locus on chromosome 20 contains the majority of the type 2 cystatin genes and pseudogenes. This gene is located in the cystatin locus and encodes a protein similar to mouse cystatin 9. Based on its testis-specific expression, it is likely to have a role in tissue reorganization during early testis development.

Zhang Z., Protein Sci. 13:2819-2824(2004).

Deloukas P., Nature 414:865-871(2001).

Clark H.F., Genome Res. 13:2265-2270(2003).

Overview

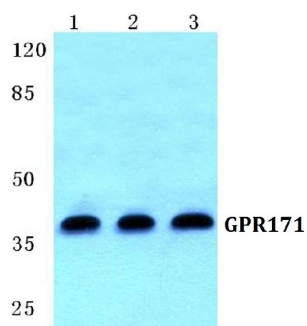
Product Name	Anti-GPR171 Antibody
Reactive Species	Human, Mouse, Rat
Description	Boster Bio Anti-GPR171 Antibody catalog # A14498-2. Tested in WB,IF applications. This antibody reacts with Human,Mouse,Rat.
Application	IF, WB
Clonality	Polyclonal
Formulation	Rabbit IgG, 1mg/ml in PBS with 0.02% sodium azide, 50% glycerol, pH7.2
Storage Instructions	Store at -20°C for one year. For short term storage and frequent use, store at 4°C for up to one month. Avoid repeated freeze-thaw cycles.
Host	Rabbit
Uniprot ID	O14626

Technical Details

Immunogen	Synthetic Peptide
Predicted Reactive Species	Chimpanzee, Drosophila, Macaque
Isotype	IgG
Form	Liquid

Concentration	1 mg/ml
Purification	The antibody was affinity-purified from rabbit antiserum by affinity-chromatography using epitope-specific immunogen and the purity is > 95% (by SDS-PAGE).
Suggested Dilutions	<p>Dilute the sample so that the expected range of concentrations fall within the detection range of this kit.</p> <p>If the expected range of concentration is unknown, a pilot test should be conducted to decide the optimal dilution ratio for your samples.</p> <p>Some PubMed article(s) citing the expression level of this target are as follows:</p> <p>Boster Bio's internal QC testing used:</p> <p>WB: 1:500-1:1000</p> <p>IF: 1:50-1:200</p>

Anti-GPR171 Antibody (A14498-2) Images



Western blot (WB) analysis of GPR171 polyclonal antibody at 1:500 dilution
Lane1:HEK293T cell lysate
Lane2:Mouse liver tissue lysate
Lane3:Rat liver tissue lysate

Submit a product review to Biocompare.com

Submit a review of this product to Biocompare.com to receive a \$20 Amazon.com giftcard! Your reviews help your fellow scientists make the right decisions. Thank you for your contribution.



Anti-GPR171 Antibody