

Anti-MRP-L35 Antibody

Catalog Number: A14506

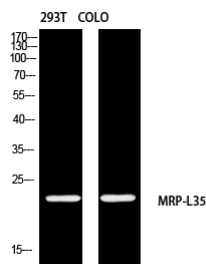
Overview

Product Name	Anti-MRP-L35 Antibody
Reactive Species	Human, Mouse
Description	Boster Bio Anti-MRP-L35 Antibody catalog # A14506. Tested in WB, IHC applications. This antibody reacts with Human, Mouse.
Application	IHC, WB
Clonality	Polyclonal
Formulation	Liquid in PBS containing 50% glycerol, 0.5% stabilizing protein and 0.02% sodium azide. This antibody is supplied in a stabilized formulation. Compatibility with conjugation reactions depends on the chemistry of the conjugation method used. For conjugation methods that are not compatible with the stabilizing components present in this formulation, a carrier-free antibody format is required.
Storage Instructions	Store at -20°C for one year. For short term storage and frequent use, store at 4°C for up to one month. Avoid repeated freeze-thaw cycles.
Host	Rabbit
Uniprot ID	Q9NZE8

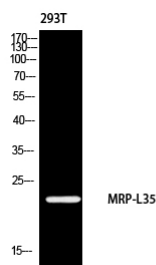
Technical Details

Immunogen	Synthesized peptide derived from MRP-L35 . at AA range: 80-160
Isotype	IgG
Form	Liquid
Concentration	1 mg/ml
Purification	Immunogen affinity purified
Suggested Dilutions	WB 1:500-2000 IHC 1:50-300

Anti-MRP-L35 Antibody (A14506) Images



Western Blot (WB) analysis of 293T COLO205 using MRP-L35 antibody.



Western Blot (WB) analysis of 293 using MRP-L35 antibody.

Submit a product review to [Biocompare.com](https://www.biocompare.com)

Submit a review of this product to [Biocompare.com](https://www.biocompare.com) to receive a \$20 Amazon.com giftcard! Your reviews help your fellow scientists make the right decisions. Thank you for your contribution.



Anti-MRP-L35 Antibody

For Research Use Only. Not for use in diagnostic procedures.