

Anti-PIGY Antibody

Catalog Number: A14537

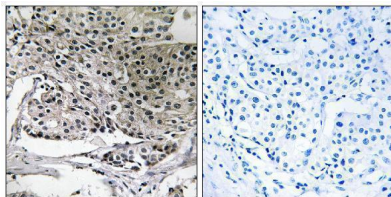
Overview

Product Name	Anti-PIGY Antibody
Reactive Species	Human, Mouse
Description	Boster Bio Anti-PIGY Antibody (Catalog# A14537). Tested in IHC, ICC, IF, ELISA applications. This antibody reacts with Human, Mouse.
Application	ELISA, IF, IHC, ICC
Clonality	Polyclonal
Formulation	PBS containing 50% glycerol, 0.5% stabilizing protein and 0.02% sodium azide. This antibody is supplied in a stabilized formulation. Compatibility with conjugation reactions depends on the chemistry of the conjugation method used. For conjugation methods that are not compatible with the stabilizing components present in this formulation, a carrier-free antibody format is required.
Storage Instructions	Store at -20°C for one year. For short-term storage and frequent use, store at 4°C for up to one month. Avoid repeated freeze-thaw cycles.
Host	Rabbit
Uniprot ID	Q3MUJ2

Technical Details

Immunogen	A peptide derived from human PIGY. Immunogen sequence location: 3-52
Isotype	Rabbit IgG
Form	Liquid
Concentration	0.5-1mg/ml, actual concentration vary by lot. Use suggested dilution ratio to decide dilution procedure.
Purification	The antibody was purified from rabbit antiserum by affinity-chromatography using immunogen.
Suggested Dilutions	IHC 1:100 - 1:300. ELISA: 1:20000. ICC/IF 1:50-200

Anti-PIGY Antibody (A14537) Images



Immunohistochemistry analysis of paraffin-embedded human breast carcinoma tissue, using PIGY Antibody. The picture on the right is blocked with the synthesized peptide.

Submit a product review to Biocompare.com

Submit a review of this product to Biocompare.com to receive a \$20 Amazon.com giftcard! Your reviews help your fellow scientists make the right decisions. Thank you for your contribution.



Anti-PIGY Antibody

For Research Use Only. Not for use in diagnostic procedures.