

Anti-PIG-Y Antibody

Catalog Number: A14537-1

About PIGY

Glycosylphosphatidylinositol (GPI) lipid anchoring is an important post-translational modification of proteins that takes place in the endoplasmic reticulum. The synthesis of GPI is initiated by GPI-N-acetylglucosaminyltransferase (GPI-GnT), a complex of proteins including PIG-A, PIG-H, PIG-C, GPI1, and DPM2. PIG-Y, the mammalian homolog to yeast Eri1p, is also thought to be involved in the biosynthesis of GPI. The PIG-Y gene encodes two proteins, one of which arises from leaky scanning of the mRNA.

Overview

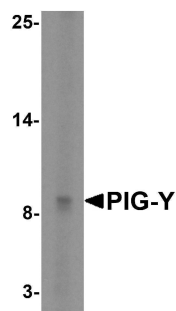
Product Name	Anti-PIG-Y Antibody
Reactive Species	Human, Mouse
Description	Boster Bio Anti-PIG-Y Antibody (Catalog # A14537-1). Tested in ELISA, WB, IHC-P, IF applications. This antibody reacts with Human, Mouse.
Application	ELISA, IF, IHC-P, WB
Clonality	Polyclonal
Formulation	PIG-Y Antibody is supplied in PBS containing 0.02% sodium azide.
Storage Instructions	PIG-Y antibody can be stored at 4°C for three months and -20°C, stable for up to one year. Avoid repeated freeze-thaw cycles. Antibodies should not be exposed to prolonged high temperatures.
Host	Rabbit
Uniprot ID	Q3MUY2

Technical Details

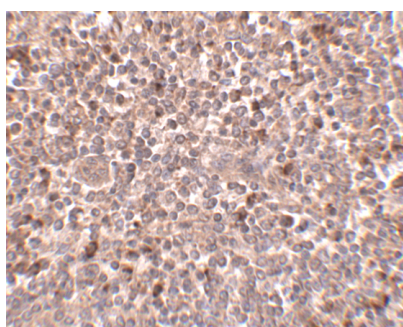
Immunogen	PIG-Y antibody was raised against a 16 amino acid synthetic peptide near the carboxy terminus of human PIG-Y. The immunogen is located within the last 50 amino acids of PIG-Y.
Predicted Reactive Species	Bovine
Cross Reactivity	This antibody only detects isoform 1 of PIG-Y.
Isotype	IgG
Form	Liquid
Concentration	1 mg/mL
Purification	PIG-Y Antibody is affinity chromatography purified via peptide column.
Suggested Dilutions	PIG-Y antibody can be used for detection of PIG-Y by Western blot at 5 ug/mL. Despite its predicted

molecular weight, PIG-Y often migrates at 28-30 kDa in SDS-PAGE. Antibody can also be used for immunohistochemistry starting at 2.5 ug/mL. For immunofluorescence start at 20 ug/mL. Antibody validated: Western Blot in human samples; Immunohistochemistry in human samples and Immunofluorescence in human samples. All other applications and species not yet tested. Optimal dilutions for each application should be determined by the researcher.

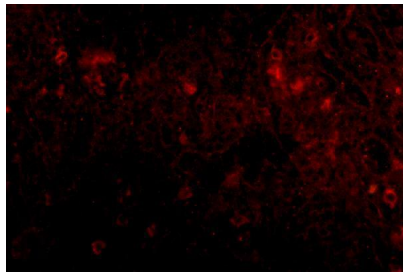
Anti-PIG-Y Antibody (A14537-1) Images



Western blot analysis of PIG-Y in human skeletal muscle tissue lysate with PIG-Y antibody at 5 ug/mL.



Immunohistochemistry of PIGY in human spleen tissue with PIGY antibody at 2.5 ug/mL.



Immunofluorescence of PIGY in human spleen tissue with PIGY1 antibody at 20 ug/mL.

Submit a product review to [Biocompare.com](https://www.biocompare.com)

Submit a review of this product to [Biocompare.com](https://www.biocompare.com) to receive a \$20 Amazon.com giftcard! Your reviews help your fellow scientists make the right decisions. Thank you for your contribution.



Anti-PIG-Y Antibody

For Research Use Only. Not for use in diagnostic procedures.