

## Anti-APC13 ANAPC13 Antibody

Catalog Number: A14554

### About ANAPC13

Cell cycle regulated protein ubiquitination and degradation within subcellular domains is thought to be essential for the normal progression of mitosis. APC13 is a highly conserved component of the anaphase promoting complex/cyclosome (APC/C), a cell cycle-regulated E3 ubiquitin ligase that controls progression through mitosis and the G1 phase of the cell cycle. APC/C is responsible for degrading anaphase inhibitors, mitotic cyclins, and spindle-associated proteins ensuring that events of mitosis take place in proper sequence. The individual APC/C components mRNA and protein levels are expressed at approximately the same levels in most tissues and cell lines, suggesting that they perform their functions as part of a complex. APC13 promotes the stable association of APC3/Cdc27 and APC6/Cdc16 with the APC/C.

### Overview

Product Name	Anti-APC13 ANAPC13 Antibody
Reactive Species	Human, Mouse, Rat
Description	Boster Bio Anti-APC13 ANAPC13 Antibody (Catalog # A14554). Tested in ELISA, WB, IF applications. This antibody reacts with Human, Mouse, Rat.
Application	ELISA, IF, WB
Clonality	Polyclonal
Formulation	APC13 Antibody is supplied in PBS containing 0.02% sodium azide.
Storage Instructions	APC13 antibody can be stored at 4°C for three months and -20°C, stable for up to one year. Avoid repeated freeze-thaw cycles. Antibodies should not be exposed to prolonged high temperatures.
Host	Rabbit
Uniprot ID	Q9BS18

### Technical Details

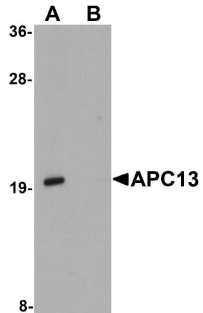
Immunogen	APC13 antibody was raised against a 17 amino acid synthetic peptide near the center of human APC13. The immunogen is located within the last 50 amino acids of APC13.
Predicted Reactive Species	Bovine
Isotype	IgG
Form	Liquid
Concentration	1 mg/mL
Purification	APC13 Antibody is affinity chromatography purified via peptide column.

**Suggested Dilutions**

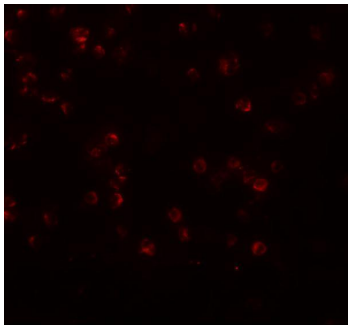
APC13 antibody can be used for detection of APC13 by Western blot at 1 ug/mL. For immunofluorescence start at 20 ug/mL.

Antibody validated: Western Blot in human samples and Immunofluorescence in human samples. All other applications and species not yet tested. Optimal dilutions for each application should be determined by the researcher.

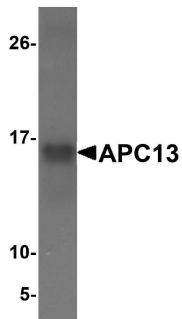
## Anti-APC13 ANAPC13 Antibody (A14554) Images



Western blot analysis of APC13 in Jurkat cell tissue lysate with APC13 antibody at 1 ug/mL in (A) the absence and (B) the presence of blocking peptide.



Immunofluorescence of APC13 in Jurkat cells with APC13 antibody at 20 ug/mL.



Western blot analysis with 25ng of recombinant APC13 protein with APC13 antibody at 1 ug/ml.

### Submit a product review to [Biocompare.com](https://www.biocompare.com)

Submit a review of this product to [Biocompare.com](https://www.biocompare.com) to receive a \$20 Amazon.com giftcard! Your reviews help your fellow scientists make the right decisions. Thank you for your contribution.



Anti-APC13 ANAPC13 Antibody

For Research Use Only. Not for use in diagnostic procedures.