

Anti-Arylsulfatase F (Y341) ARSF Antibody

Catalog Number: A14632Y341

Overview

Product Name	Anti-Arylsulfatase F (Y341) ARSF Antibody
Reactive Species	Human
Description	Boster Bio Anti-Arylsulfatase F (Y341) ARSF Antibody catalog # A14632Y341. Tested in WB,IHC applications. This antibody reacts with Human.
Application	IHC, WB
Clonality	Polyclonal
Formulation	Rabbit IgG, 1mg/ml in PBS with 0.02% sodium azide, 50% glycerol, pH7.2
Storage Instructions	Store at -20°C for one year. For short term storage and frequent use, store at 4°C for up to one month. Avoid repeated freeze-thaw cycles.
Host	Rabbit
Uniprot ID	P54793

Technical Details

Immunogen	Synthetic peptide, corresponding to amino acids 300-350 of Human Arylsulfatase F.
Isotype	IgG
Form	Liquid
Concentration	1 mg/ml
Purification	The antibody was affinity-purified from rabbit antiserum by affinity-chromatography using epitope-specific immunogen and the purity is > 95% (by SDS-PAGE).
Suggested Dilutions	WB: 1:500-1:1000 IHC: 1:50-1:200

Anti-Arylsulfatase F (Y341) ARSF Antibody (A14632Y341) Images

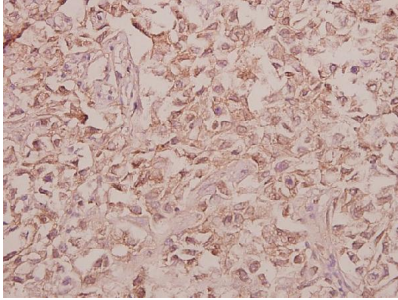


Figure 1. Immunohistochemistry validation of ARSF using Anti-Arylsulfatase F (Y341) ARSF Antibody (A14632Y341).

Immunohistochemistry (IHC) analyzes of Arylsulfatase F (Y341) pAb in paraffin-embedded human colorectal carcinoma tissue at 1:50.

For more protocol information of IHC

Submit a product review to Biocompare.com

Submit a review of this product to Biocompare.com to receive a \$20 Amazon.com giftcard! Your reviews help your fellow scientists make the right decisions. Thank you for your contribution.



Anti-Arylsulfatase F (Y341) ARSF Antibody