

## Anti-SPATA19 Antibody

Catalog Number: A14636

### About SPATA19

SPATA19, also known as SPERGEN1, was initially identified as a testis-specific protein that localizes to the surface of mitochondria in the middle piece of mature spermatozoa. Recent experiments have shown that elevated levels of SPATA19 have been found in basal cell carcinomas and prostate cancers, suggesting that SPATA19 may serve as a putative cancer biomarker and a target for cancer immunotherapy.

### Overview

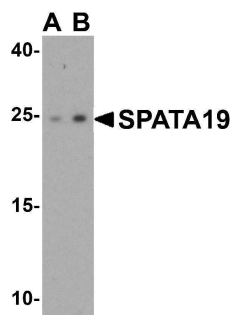
|                      |  |
|----------------------|--|
| Product Name         | Anti-SPATA19 Antibody  |
| Reactive Species     | Human, Mouse, Rat  |
| Description          | Boster Bio Anti-SPATA19 Antibody (Catalog # A14636). Tested in ELISA, WB applications. This antibody reacts with Human, Mouse, Rat.  |
| Application          | ELISA, WB  |
| Clonality            | Polyclonal   |
| Formulation          | SPATA19 Antibody is supplied in PBS containing 0.02% sodium azide.   |
| Storage Instructions | SPATA19 antibody can be stored at 4°C for three months and -20°C, stable for up to one year. Avoid repeated freeze-thaw cycles. Antibodies should not be exposed to prolonged high temperatures. |
| Host                 | Chicken  |
| Uniprot ID           | Q7Z5L4   |

### Technical Details

|                            |  |
|----------------------------|--|
| Immunogen                  | SPATA19 antibody was raised against an 17 amino acid synthetic peptide near the amino terminus of human SPATA19. The immunogen is located within amino acids 30 - 80 of SPATA19. |
| Predicted Reactive Species | Bovine   |
| Cross Reactivity           | At least two isoforms of SPATA19 are known to exist; this antibody will detect both isoforms. SPATA19 antibody is predicted to not cross-react with other SPATA family members.  |
| Isotype                    | IgY  |
| Form                       | Liquid   |
| Concentration              | 1 mg/mL  |
| Purification               | SPATA19 Antibody is affinity chromatography purified via peptide column.   |
| Suggested Dilutions        | SPATA19 antibody can be used for detection of SPATA19 by Western blot at 1 - 2 ug/mL.  |

Antibody validated: Western Blot in human samples. All other applications and species not yet tested. Optimal dilutions for each application should be determined by the researcher.

## Anti-SPATA19 Antibody (A14636) Images



Western blot analysis of SPATA19 in human testis tissue lysate with SPATA19 antibody at (A) 1 and (B) 2 ug/mL.

### Submit a product review to Biocompare.com

Submit a review of this product to Biocompare.com to receive a \$20 Amazon.com giftcard! Your reviews help your fellow scientists make the right decisions. Thank you for your contribution.



Anti-SPATA19 Antibody

For Research Use Only. Not for use in diagnostic procedures.