

Anti-Prickle-like protein 4 PRICKLE4 Antibody

Catalog Number: A14637

About PRICKLE4

PRICKLE4, also known as over-expressed breast tumor protein (OBTP), is a member of the LIM family of proteins. It possesses two LIM domains as well as a PET domain and is thought to localize to the nucleus. Its expression in multiple malignant tissue differentiations indicate that it may play a role in cancer differentiation. Two other members of the LIM family, PRICKLE1 and PRICKLE2, are thought to function in the noncanonical WNT signaling pathway which regulates intracellular calcium release and planar cell polarity, suggesting the PRICKLE4 may play a similar role.

Overview

Product Name	Anti-Prickle-like protein 4 PRICKLE4 Antibody
Reactive Species	Human
Description	Boster Bio Anti-Prickle-like protein 4 PRICKLE4 Antibody (Catalog # A14637). Tested in ELISA, WB, ICC, IF applications. This antibody reacts with Human.
Application	ELISA, IF, ICC, WB
Clonality	Polyclonal
Formulation	PRICKLE4 Antibody is supplied in PBS containing 0.02% sodium azide.
Storage Instructions	PRICKLE4 antibody can be stored at 4°C for three months and -20°C, stable for up to one year. Avoid repeated freeze-thaw cycles. Antibodies should not be exposed to prolonged high temperatures.
Host	Rabbit
Uniprot ID	Q2TBC4

Technical Details

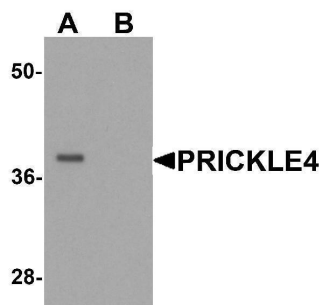
Immunogen	PRICKLE4 antibody was raised against an 18 amino acid synthetic peptide near the amino terminus of human PRICKLE4. The immunogen is located within the first 50 amino acids of PRICKLE4.
Predicted Reactive Species	Bovine
Cross Reactivity	Two isoforms of PRICKLE4 are known to exist. PRICKLE4 antibody is predicted to not cross-react with other PRICKLE protein family members.
Isotype	IgG
Form	Liquid
Concentration	1 mg/mL
Purification	PRICKLE4 Antibody is affinity chromatography purified via peptide column.

Suggested Dilutions

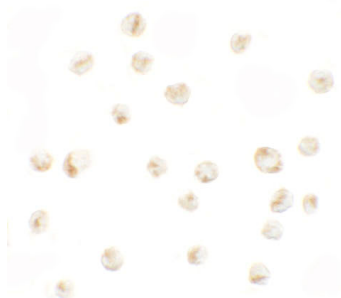
PRICKLE4 antibody can be used for detection of PRICKLE4 by Western blot at 0.25 ug/mL. Antibody can also be used for immunocytochemistry starting at 5 ug/mL. For immunofluorescence start at 5 ug/mL.

Antibody validated: Western Blot in human samples; Immunocytochemistry in human samples and Immunofluorescence in human samples. All other applications and species not yet tested. Optimal dilutions for each application should be determined by the researcher.

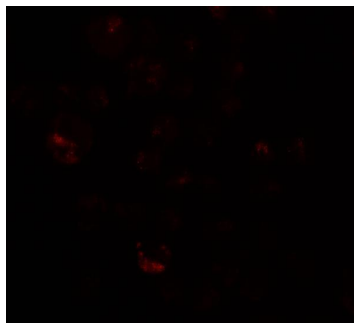
Anti-Prickle-like protein 4 PRICKLE4 Antibody (A14637) Images



Western blot analysis of PRICKLE4 in A549 cell lysate with PRICKLE4 antibody at 0.25 ug/ml in the (A) absence and (B) presence of blocking peptide.



Immunocytochemistry of PRICKLE4 in A549 cells with PRICKLE4 antibody at 5 ug/mL.



Immunofluorescence of PRICKLE4 in A549 cells with PRICKLE4 antibody at 20 ug/mL.

Submit a product review to [Biocompare.com](https://www.biocompare.com)

Submit a review of this product to [Biocompare.com](https://www.biocompare.com) to receive a \$20 Amazon.com giftcard! Your reviews help your fellow scientists make the right decisions. Thank you for your contribution.



Anti-Prickle-like protein 4 PRICKLE4 Antibody

For Research Use Only. Not for use in diagnostic procedures.