

Anti-HHATL Antibody

Catalog Number: A14660

About HHATL

The Protein-cysteine N-palmitoyltransferase HHAT-like protein (HHATL), also known as the mammalian glycerol uptake/transporter 1 (Gup1) is a homolog of the *S. cerevisiae* Gup1. It is an endoplasmic reticulum (ER) membrane protein that co-localizes with the mammalian hedgehog acyltransferase Skn and interferes with its N-terminal palmitoylation of Sonic hedgehog (SHH), suggesting that HHATL acts as a negative regulator for N-terminal palmitoylation of SHH. HHATL is highly expressed in normal skin, but becomes down-regulated in skin squamous cell carcinoma, suggesting it may play a role in its development.

Overview

Product Name	Anti-HHATL Antibody
Reactive Species	Human, Mouse, Rat
Description	Boster Bio Anti-HHATL Antibody (Catalog # A14660). Tested in ELISA, WB, IHC-P, IF applications. This antibody reacts with Human, Mouse, Rat.
Application	ELISA, IF, IHC-P, WB
Clonality	Polyclonal
Formulation	HHATL Antibody is supplied in PBS containing 0.02% sodium azide.
Storage Instructions	HHATL antibody can be stored at 4°C for three months and -20°C, stable for up to one year. Avoid repeated freeze-thaw cycles. Antibodies should not be exposed to prolonged high temperatures.
Host	Rabbit
Uniprot ID	Q9HCP6

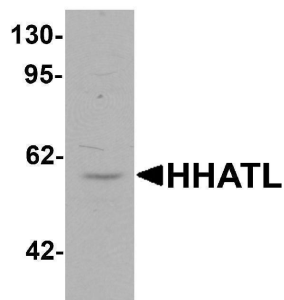
Technical Details

Immunogen	HHATL antibody was raised against a 19 amino acid synthetic peptide near the amino terminus of human HHATL. The immunogen is located within the first 50 amino acids of HHATL.
Predicted Reactive Species	Bovine
Isotype	IgG
Form	Liquid
Concentration	1 mg/mL
Purification	HHATL Antibody is affinity chromatography purified via peptide column.
Suggested Dilutions	HHATL antibody can be used for detection of HHATL by Western blot at 1 ug/mL. Antibody can also be used for immunohistochemistry starting at 2.5 ug/mL. For immunofluorescence start at 2.5

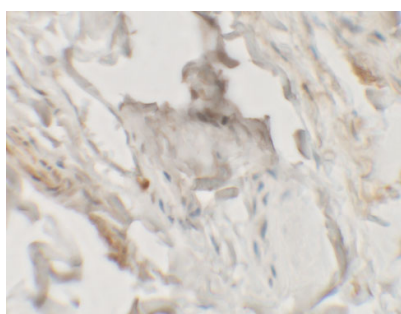
ug/mL.

Antibody validated: Western Blot in mouse samples; Immunohistochemistry in human samples and Immunofluorescence in human samples. All other applications and species not yet tested. Optimal dilutions for each application should be determined by the researcher.

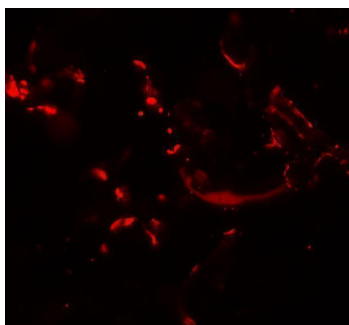
Anti-HHATL Antibody (A14660) Images



Western blot analysis of HHATL in 3T3 cell lysate with HHATL antibody at 1 ug/mL.



Immunohistochemistry of HHATL in human skin tissue with HHATL antibody at 2.5 ug/mL.



Immunofluorescence of HHATL in human skin tissue with HHATL antibody at 20 ug/mL.

Submit a product review to [Biocompare.com](https://www.biocompare.com)

Submit a review of this product to [Biocompare.com](https://www.biocompare.com) to receive a \$20 Amazon.com giftcard! Your reviews help your fellow scientists make the right decisions. Thank you for your contribution.



Anti-HHATL Antibody

For Research Use Only. Not for use in diagnostic procedures.