

## Anti-ARMX3 ARMCX3 Antibody

Catalog Number: A14662-1

### Overview

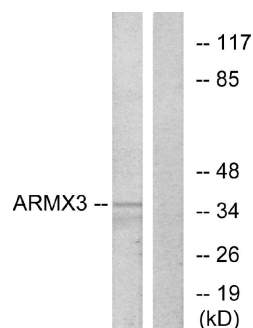
Product Name	Anti-ARMX3 ARMCX3 Antibody
Reactive Species	Human, Mouse, Rat
Description	Boster Bio Anti-ARMX3 ARMCX3 Antibody (Catalog# A14662-1). Tested in WB, IHC-P, IF, ICC, ELISA applications. This antibody reacts with Human, Mouse, Rat.
Application	ELISA, IF, IHC-P, ICC, WB
Clonality	Polyclonal
Formulation	PBS containing 50% glycerol, 0.5% BSA and 0.02% sodium azide.
Storage Instructions	Store at -20°C for one year. For short-term storage and frequent use, store at 4°C for up to one month. Avoid repeated freeze-thaw cycles.
Host	Rabbit
Uniprot ID	Q9UH62

### Technical Details

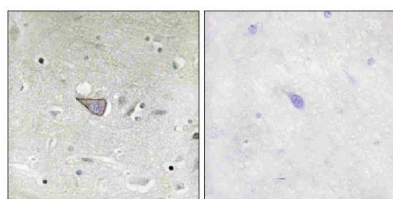
Immunogen	A peptide derived from human ARMX3. Immunogen sequence location: 291-340
Predicted Reactive Species	Bovine, Canine, Chicken, Primate, Sheep, Xenopus, Zebrafish
Isotype	Rabbit IgG
Form	Liquid
Concentration	0.5-1mg/ml, actual concentration vary by lot. Use suggested dilution ratio to decide dilution procedure.
Purification	The antibody was purified from rabbit antiserum by affinity-chromatography using immunogen.
Suggested Dilutions	<p>Dilute the sample so that the expected range of concentrations fall within the detection range of this kit.</p> <p>If the expected range of concentration is unknown, a pilot test should be conducted to decide the optimal dilution ratio for your samples.</p> <p>Some PubMed article(s) citing the expression level of this target are as follows:</p> <p>Boster Bio's internal QC testing used:</p> <p>Western Blot, 1:500 - 1:2000</p> <p>Immunohistochemistry, 1:100 - 1:300</p> <p>Immunofluorescence, 1:200 - 1:1000</p> <p>ELISA, 1:5000</p> <p>Not yet tested in other applications.</p>



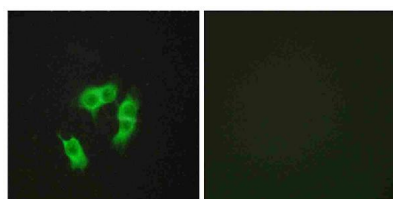
## Anti-ARMX3 ARMCX3 Antibody (A14662-1) Images



Western blot analysis of lysates from K562 cells, using ARMX3 Antibody. The lane on the right is blocked with the synthesized peptide.



Immunohistochemistry analysis of paraffin-embedded human brain tissue, using ARMX3 Antibody. The picture on the right is blocked with the synthesized peptide.



Immunofluorescence analysis of HepG2 cells, using ARMX3 Antibody. The picture on the right is blocked with the synthesized peptide.

## Submit a product review to Biocompare.com

Submit a review of this product to Biocompare.com to receive a \$20 Amazon.com giftcard! Your reviews help your fellow scientists make the right decisions. Thank you for your contribution.



Anti-ARMX3 ARMCX3 Antibody