

Anti-Olfactory receptor 6Q1 Antibody

Catalog Number: A14742

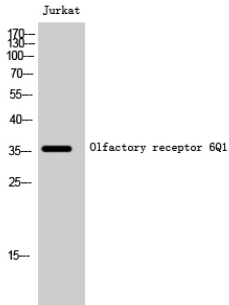
Overview

Product Name	Anti-Olfactory receptor 6Q1 Antibody
Reactive Species	Human
Description	Boster Bio Anti-Olfactory receptor 6Q1 Antibody catalog # A14742. Tested in WB, IF, ELISA applications. This antibody reacts with Human.
Application	ELISA, IF, WB
Clonality	Polyclonal
Formulation	Liquid in PBS containing 50% glycerol, 0.5% stabilizing protein and 0.02% sodium azide. This antibody is supplied in a stabilized formulation. Compatibility with conjugation reactions depends on the chemistry of the conjugation method used. For conjugation methods that are not compatible with the stabilizing components present in this formulation, a carrier-free antibody format is required.
Storage Instructions	Store at -20°C for one year. For short term storage and frequent use, store at 4°C for up to one month. Avoid repeated freeze-thaw cycles.
Host	Rabbit
Uniprot ID	Q8NGQ2

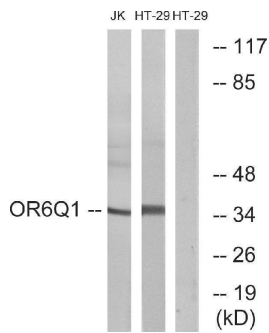
Technical Details

Immunogen	The antiserum was produced against synthesized peptide derived from human OR6Q1. AA range:23-72
Isotype	IgG
Form	Liquid
Concentration	1 mg/ml
Purification	Immunogen affinity purified
Suggested Dilutions	WB 1:500-1:2000 IF 1:200-1:1000 ELISA 1:20000

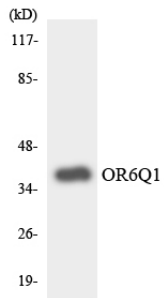
Anti-Olfactory receptor 6Q1 Antibody (A14742) Images



Western Blot analysis of Jurkat cells using Olfactory receptor 6Q1 Polyclonal Antibody diluted at 1:1000



Western blot analysis of lysates from Jurkat and HT-29 cells, using OR6Q1 Antibody. The lane on the right is blocked with the synthesized peptide.



Western blot analysis of the lysates from HT-29 cells using OR6Q1 antibody.

Submit a product review to [Biocompare.com](https://www.biocompare.com)

Submit a review of this product to [Biocompare.com](https://www.biocompare.com) to receive a \$20 Amazon.com giftcard! Your reviews help your fellow scientists make the right decisions. Thank you for your contribution.



Anti-Olfactory receptor 6Q1 Antibody

For Research Use Only. Not for use in diagnostic procedures.