

Anti-ENC-2 KLHL25 Antibody

Catalog Number: A14745

About KLHL25

The ectoderm-neural cortex-2 (ENC-2) protein a member of the BTB/PDZ Kelch protein family displaying significant homology to ENC-1, an actin-binding protein involved in neural fate specification during embryogenesis and adipocyte maturation. The exact function of ENC-2 has yet to be determined, but it has been suggested to be involved in the differentiation of neuronal precursor cells into neurons and astrocytes.

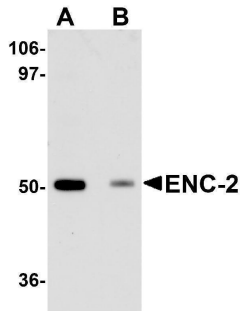
Overview

Product Name	Anti-ENC-2 KLHL25 Antibody
Reactive Species	Human
Description	Boster Bio Anti-ENC-2 KLHL25 Antibody (Catalog # A14745). Tested in ELISA, WB, ICC, IF applications. This antibody reacts with Human.
Application	ELISA, IF, ICC, WB
Clonality	Polyclonal
Formulation	ENC-2 Antibody is supplied in PBS containing 0.02% sodium azide.
Storage Instructions	ENC-2 antibody can be stored at 4°C for three months and -20°C, stable for up to one year. Avoid repeated freeze-thaw cycles. Antibodies should not be exposed to prolonged high temperatures.
Host	Chicken
Uniprot ID	Q9H0H3

Technical Details

Immunogen	ENC-2 antibody was raised against a 14 amino acid synthetic peptide near the center of human ENC-2. The immunogen is located within amino acids 230 - 280 of ENC-2.
Isotype	IgY
Form	Liquid
Concentration	1 mg/mL
Purification	ENC-2 Antibody is affinity chromatography purified via peptide column.
Suggested Dilutions	ENC-2 antibody can be used for detection of ENC-2 by Western blot at 1 ug/mL. Antibody can also be used for immunocytochemistry starting at 5 ug/mL. For immunofluorescence start at 20 ug/mL. Antibody validated: Western Blot in human samples; Immunocytochemistry in human samples and Immunofluorescence in human samples. All other applications and species not yet tested. Optimal dilutions for each application should be determined by the researcher.

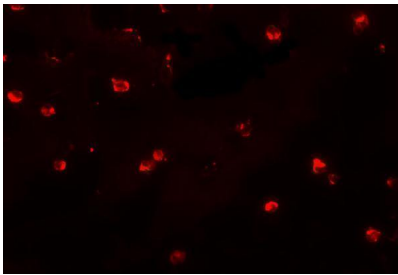
Anti-ENC-2 KLHL25 Antibody (A14745) Images



Western blot analysis of ENC-2 in Jurkat cell lysate with ENC-2 antibody at 1 ug/mL in (A) the absence and (B) the presence of blocking peptide.



Immunocytochemistry of ENC-2 in Jurkat cells with ENC-2 antibody at 5 ug/mL.



Immunofluorescence of ENC-2 in Jurkat cells with ENC-2 antibody at 20 ug/mL.

Submit a product review to [Biocompare.com](https://www.biocompare.com)

Submit a review of this product to [Biocompare.com](https://www.biocompare.com) to receive a \$20 Amazon.com giftcard! Your reviews help your fellow scientists make the right decisions. Thank you for your contribution.



Anti-ENC-2 KLHL25 Antibody

For Research Use Only. Not for use in diagnostic procedures.