

## Anti-FSTL4 Antibody Picoband®

Catalog Number: A14838-2

### About FSTL4

Predicted to enable brain-derived neurotrophic factor binding activity and calcium ion binding activity. Predicted to be involved in cell differentiation and regulation of BMP signaling pathway. Predicted to act upstream of or within negative regulation of brain-derived neurotrophic factor receptor signaling pathway; negative regulation of collateral sprouting; and negative regulation of dendritic spine development. Predicted to be located in secretory granule. Predicted to be active in extracellular region.

### Overview

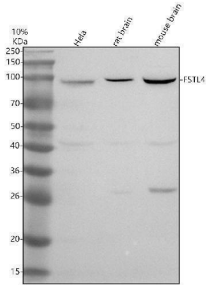
Product Name	Anti-FSTL4 Antibody Picoband®
Reactive Species	Human, Mouse, Rat
Description	Boster Bio Anti-FSTL4 Antibody Picoband® catalog # A14838-2. Tested in WB, Flow Cytometry, ELISA applications. This antibody reacts with Human, Mouse, Rat. The brand Picoband indicates this is a premium antibody that guarantees superior quality, high affinity, and strong signals with minimal background in Western blot applications. Only our best-performing antibodies are designated as Picoband, ensuring unmatched performance.
Application	ELISA, Flow Cytometry, WB
Clonality	Polyclonal
Formulation	Each vial contains 4 mg Trehalose, 0.9 mg NaCl, 0.2 mg Na <sub>2</sub> HPO <sub>4</sub> .
Storage Instructions	At -20°C for one year from date of receipt. After reconstitution, at 4°C for one month. It can also be aliquotted and stored frozen at -20°C for six months. Avoid repeated freezing and thawing.
Host	Rabbit
Uniprot ID	Q6MZW2

### Technical Details

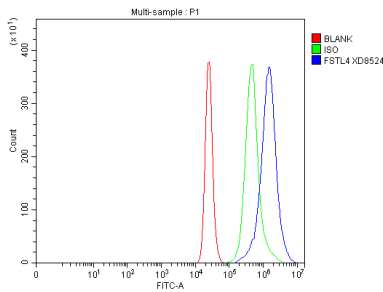
Immunogen	E.coli-derived human FSTL4 recombinant protein (Position: K149-G733).
Form	Lyophilized
Concentration	Adding 0.2 ml of distilled water will yield a concentration of 500 ug/ml.
Purification	Immunogen affinity purified.
Suggested Dilutions	Western blot, 0.25-0.5 ug/ml, Human, Mouse, Rat Flow Cytometry (Fixed), 1-3 ug/1x10 <sup>6</sup> cells, Human ELISA, 0.1-0.5 ug/ml



## Anti-FSTL4 Antibody Picoband® (A14838-2) Images



Western blot analysis of FSTL4 using anti-FSTL4 antibody (A14838-2). Electrophoresis was performed on a 10% SDS-PAGE gel at 80V (Stacking gel) / 120V (Resolving gel) for 2 hours. The sample well of each lane was loaded with 30 ug of sample under reducing conditions. Lane 1: human Hela whole cell lysates, Lane 2: rat brain tissue lysates, Lane 3: mouse brain tissue lysates. After electrophoresis, proteins were transferred to a nitrocellulose membrane at 150 mA for 50-90 minutes. Blocked the membrane with 5% non-fat milk/TBS for 1.5 hour at RT. The membrane was incubated with rabbit anti-FSTL4 antigen affinity purified polyclonal antibody (A14838-2) at 0.5 ug/mL overnight at 4°C, then washed with TBS-0.1% Tween 3 times with 5 minutes each and probed with a goat anti-rabbit IgG-HRP secondary antibody at a dilution of 1:5000 for 1.5 hour at RT. The signal is developed using an ECL Plus Western Blotting Substrate (Catalog # AR1196-200) with Tanon 5200 system. A specific band was detected for FSTL4 at approximately 93 kDa. The expected band size for FSTL4 is at 93 kDa.



Flow Cytometry analysis of RT4 cells using anti-FSTL4 antibody (A14838-2). Overlay histogram showing RT4 cells stained with A14838-2 (Blue line). The cells were fixed with 4% paraformaldehyde and blocked with 10% normal goat serum. And then incubated with rabbit anti-FSTL4 Antibody (A14838-2, 1 ug/1x10<sup>6</sup> cells) for 30 min at 20°C. Fluoro488 conjugated goat anti-rabbit IgG (BA1127, 5-10 ug/1x10<sup>6</sup> cells) was used as secondary antibody for 30 minutes at 20°C. Isotype control antibody (Green line) was rabbit IgG (1 ug/1x10<sup>6</sup>) used under the same conditions. Unlabelled sample without incubation with primary antibody and secondary antibody (Red line) was used as a blank control.

### Submit a product review to Biocompare.com

Submit a review of this product to Biocompare.com to receive a \$20 Amazon.com giftcard! Your reviews help your fellow scientists make the right decisions. Thank you for your contribution.



### Anti-FSTL4 Antibody

For Research Use Only. Not for use in diagnostic procedures.