

Anti-SPATA6 Antibody

Catalog Number: A14863

About SPATA6

The development of spermatogonial stem cells into spermatozoa, i.e., spermatogenesis, is a highly ordered process that requires multiple proteins, including some that are testis-specific or testis-specific isoforms of genes that are expressed in other tissues. One such protein is SPATA6: while its full-length isoform is expressed in multiple tissues including thymus, brain and testis, the shorter isoform is expressed only in testis. It has some homology to the motor domain of kinesin related proteins and with the C. elegans neural calcium sensor protein NCS-2.

Overview

Product Name	Anti-SPATA6 Antibody
Reactive Species	Human, Mouse, Rat
Description	Boster Bio Anti-SPATA6 Antibody (Catalog # A14863). Tested in ELISA, WB, IHC-P, IF applications. This antibody reacts with Human, Mouse, Rat.
Application	ELISA, IF, IHC-P, WB
Clonality	Polyclonal
Formulation	SPATA6 Antibody is supplied in PBS containing 0.02% sodium azide.
Storage Instructions	SPATA6 antibody can be stored at 4°C for three months and -20°C, stable for up to one year. Avoid repeated freeze-thaw cycles. Antibodies should not be exposed to prolonged high temperatures.
Host	Rabbit
Uniprot ID	Q9NWH7

Technical Details

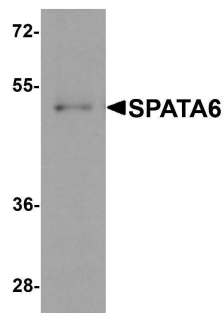
Immunogen	SPATA6 antibody was raised against a 14 amino acid synthetic peptide near the carboxy terminus of human SPATA6. The immunogen is located within amino acids 400 - 450 of SPATA6.
Predicted Reactive Species	Bovine
Cross Reactivity	At least three isoforms of SPATA6 are known to exist; this antibody will detect only the longest two isoforms. SPATA6 antibody is predicted to not cross-react with other SPATA protein family members.
Isotype	IgG
Form	Liquid
Concentration	1 mg/mL
Purification	SPATA6 Antibody is affinity chromatography purified via peptide column.

Suggested Dilutions

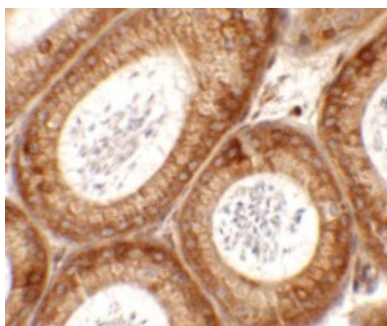
SPATA6 antibody can be used for detection of SPATA6 by Western blot at 1 ug/mL. Antibody can also be used for immunohistochemistry starting at 2.5 ug/mL. For immunofluorescence start at 20 ug/mL.

Antibody validated: Western Blot in mouse samples; Immunohistochemistry in mouse samples and Immunofluorescence in mouse samples. All other applications and species not yet tested. Optimal dilutions for each application should be determined by the researcher.

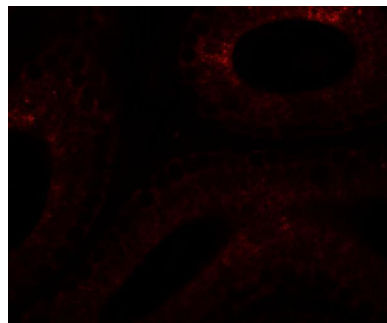
Anti-SPATA6 Antibody (A14863) Images



Western blot analysis of SPATA6 in A20 cell lysate with SPATA6 antibody at 1 ug/mL.



Immunohistochemistry of SPATA6 in mouse testis tissue with SPATA6 antibody at 2.5 ug/mL.



Immunofluorescence of SPATA6 in mouse testis tissue with SPATA6 antibody at 20 ug/mL.

Submit a product review to [Biocompare.com](https://www.biocompare.com)

Submit a review of this product to [Biocompare.com](https://www.biocompare.com) to receive a \$20 Amazon.com giftcard! Your reviews help your fellow scientists make the right decisions. Thank you for your contribution.



Anti-SPATA6 Antibody

For Research Use Only. Not for use in diagnostic procedures.