

## Anti-TMEM240 Antibody Picoband®

Catalog Number: A14889

### About TMEM240

TMEM240 is a small, highly conserved transmembrane protein expressed in brain. The TMEM240 gene maps to chromosome 1p36.33. This gene encodes a transmembrane-domain containing protein found in the brain and cerebellum. Mutations in this gene result in spinocerebellar ataxia 21.

### Overview

Product Name	Anti-TMEM240 Antibody Picoband®
Reactive Species	Human, Mouse, Rat
Description	Boster Bio Anti-TMEM240 Antibody Picoband® catalog # A14889. Tested in WB applications. This antibody reacts with Human, Mouse, Rat. The brand Picoband indicates this is a premium antibody that guarantees superior quality, high affinity, and strong signals with minimal background in Western blot applications. Only our best-performing antibodies are designated as Picoband, ensuring unmatched performance.
Application	WB
Clonality	Polyclonal
Formulation	Each vial contains 4mg Trehalose, 0.9mg NaCl, 0.2mg Na <sub>2</sub> HPO <sub>4</sub> , 0.05mg NaN <sub>3</sub> .
Storage Instructions	Store at -20°C for one year from date of receipt. After reconstitution, at 4°C for one month. It can also be aliquotted and stored frozen at -20°C for six months. Avoid repeated freeze-thaw cycles.
Host	Rabbit
Uniprot ID	Q5SV17

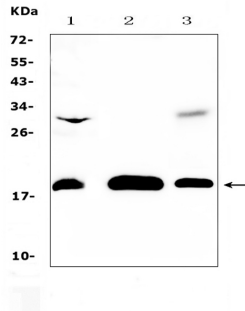
### Technical Details

Immunogen	E.coli-derived human TMEM240 recombinant protein (Position: M1-L173). Human TMEM240 shares 97.7% amino acid (aa) sequence identity with mouse TMEM240.
Recommended Detection Systems	Boster recommends Enhanced Chemiluminescent Kit with anti-Rabbit IgG (EK1002) for Western blot.
Cross Reactivity	No cross-reactivity with other proteins.
Isotype	Rabbit IgG
Form	Lyophilized
Concentration	Adding 0.2 ml of distilled water will yield a concentration of 500 ug/ml.
Purification	Immunogen affinity purified.

Suggested Dilutions

Western blot, 0.1-0.5ug/ml, Human, Mouse, Rat

## Anti-TMEM240 Antibody Picoband® (A14889) Images



Western blot analysis of TMEM240 using anti-TMEM240 antibody (A14889). Electrophoresis was performed on a 5-20% SDS-PAGE gel at 70V (Stacking gel) / 90V (Resolving gel) for 2-3 hours. The sample well of each lane was loaded with 50ug of sample under reducing conditions. Lane 1: rat brain tissue lysates, Lane 2: NIH3T3 whole Cell lysates, Lane 3: COLO320 whole cell lysates. After Electrophoresis, proteins were transferred to a Nitrocellulose membrane at 150mA for 50-90 minutes. Blocked the membrane with 5% Non-fat Milk/ TBS for 1.5 hour at RT. The membrane was incubated with rabbit anti-TMEM240 antigen affinity purified polyclonal antibody (Catalog # A14889) at 0.5 ug/mL overnight at 4°C, then washed with TBS-0.1%Tween 3 times with 5 minutes each and probed with a goat anti-rabbit IgG-HRP secondary antibody at a dilution of 1:10000 for 1.5 hour at RT. The signal is developed using an Enhanced Chemiluminescent detection (ECL) kit (Catalog # EK1002) with Tanon 5200 system. A specific band was detected for TMEM240 at approximately 19KD. The expected band size for TMEM240 is at 19KD.

### Submit a product review to Biocompare.com

Submit a review of this product to Biocompare.com to receive a \$20 Amazon.com giftcard! Your reviews help your fellow scientists make the right decisions. Thank you for your contribution.



Anti-TMEM240 Antibody

For Research Use Only. Not for use in diagnostic procedures.