

Anti-Protein yippee-like 3 YPEL3 Antibody

Catalog Number: A14890

About YPEL3

YPEL3 (yippee-like 3) belongs to a family of five yippee-like proteins, all of which localize to the centrosome or mitotic spindle and are widely expressed in both adult and fetal tissue. This localization plus the fact that the family of human YPEL proteins share a high degree of sequence homology across species suggests that these proteins may have a conserved function involved in cell division. YPEL3 is a p53-regulated gene whose expression is induced by DNA damage and in turn induces cellular senescence. It appears to function as a tumor suppressor as it is downregulated in colon and breast tumors.

Overview

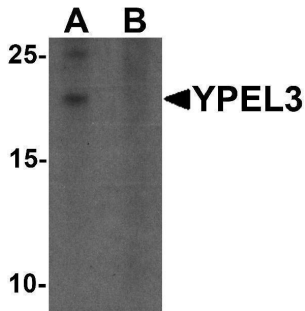
Product Name	Anti-Protein yippee-like 3 YPEL3 Antibody
Reactive Species	Human, Mouse, Rat
Description	Boster Bio Anti-Protein yippee-like 3 YPEL3 Antibody (Catalog # A14890). Tested in ELISA, WB, ICC, IF applications. This antibody reacts with Human, Mouse, Rat.
Application	ELISA, IF, ICC, WB
Clonality	Polyclonal
Formulation	YPEL3 Antibody is supplied in PBS containing 0.02% sodium azide.
Storage Instructions	YPEL3 antibody can be stored at 4°C for three months and -20°C, stable for up to one year. Avoid repeated freeze-thaw cycles. Antibodies should not be exposed to prolonged high temperatures.
Host	Rabbit
Uniprot ID	P61236

Technical Details

Immunogen	YPEL3 antibody was raised against a 15 amino acid synthetic peptide near the amino terminus of human YPEL3. The immunogen is located within amino acids 20 - 70 of YPEL3.
Predicted Reactive Species	Bovine
Isotype	IgG
Form	Liquid
Concentration	1 mg/mL
Purification	YPEL3 Antibody is affinity chromatography purified via peptide column.
Suggested Dilutions	YPEL3 antibody can be used for detection of YPEL3 by Western blot at 1 ug/mL. Antibody can also be used for immunocytochemistry starting at 2.5 ug/mL. For immunofluorescence start at 2.5 ug/mL.

Antibody validated: Western Blot in mouse samples; Immunocytochemistry in mouse samples and Immunofluorescence in mouse samples. All other applications and species not yet tested. Optimal dilutions for each application should be determined by the researcher.

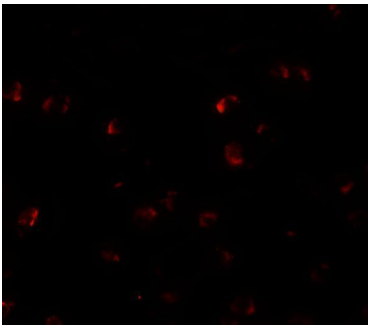
Anti-Protein yippee-like 3 YPEL3 Antibody (A14890) Images



Western blot analysis of YPEL3 in A-20 cell lysate with YPEL3 antibody at 1 ug/mL in (A) the absence and (B) the presence of blocking peptide



Immunocytochemistry of YPEL3 in A20 cells with YPEL3 antibody at 2.5 ug/mL.



Immunofluorescence of YPEL3 in A20 cells with YPEL3 antibody at 5 ug/mL.

Submit a product review to [Biocompare.com](https://www.biocompare.com)

Submit a review of this product to [Biocompare.com](https://www.biocompare.com) to receive a \$20 Amazon.com giftcard! Your reviews help your fellow scientists make the right decisions. Thank you for your contribution.



Anti-Protein yippee-like 3 YPEL3 Antibody

For Research Use Only. Not for use in diagnostic procedures.