

Anti-SLC6A16 Antibody

Catalog Number: A14901-1

About SLC6A16

Mammalian mitochondrial ribosomal proteins are encoded by nuclear genes and help in protein synthesis within the mitochondrion. The mitochondrial ribosome (mitoribosome) consists of a small 28S subunit and a large 39S subunit. They have an estimated 75% protein to rRNA composition compared to prokaryotic ribosomes, where this ratio is reversed. Another difference between mammalian mitoribosomes and prokaryotic ribosomes is that the latter contain a 5S rRNA. Among different species, the proteins comprising the mitoribosome differ greatly in sequence, and sometimes in biochemical properties, which prevents easy recognition by sequence homology. This gene encodes a 28S subunit protein. Pseudogenes corresponding to this gene are found on chromosomes 3p, 4q, 8p, 11q, 12q, and 20p.

Xu X., Submitted (MAY-2000) to the EMBL/GenBank/DDBJ databases.

The MGC Project Team; Genome Res. 14:2121-2127(2004).

Koc E.C., J. Biol. Chem. 276:19363-19374(2001).

Overview

| | |
|----------------------|--|
| Product Name | Anti-SLC6A16 Antibody |
| Reactive Species | Human, Rat |
| Description | Boster Bio Anti-SLC6A16 Antibody catalog # A14901-1. Tested in WB applications. This antibody reacts with Human,Rat. |
| Application | WB |
| Clonality | Polyclonal |
| Formulation | Rabbit IgG, 1mg/ml in PBS with 0.02% sodium azide, 50% glycerol, pH7.2 |
| Storage Instructions | Store at -20°C for one year. For short term storage and frequent use, store at 4°C for up to one month. Avoid repeated freeze-thaw cycles. |
| Host | Rabbit |
| Uniprot ID | Q9GZN6 |

Technical Details

| | |
|----------------------------|--|
| Immunogen | Synthesized peptide derived from human MRP-S36 |
| Predicted Reactive Species | Chimpanzee, Drosophila, Macaque |
| Isotype | IgG |
| Form | Liquid |
| | |

| | |
|---------------------|---|
| Concentration | 1 mg/ml |
| Purification | The antibody was affinity-purified from rabbit antiserum by affinity-chromatography using epitope-specific immunogen and the purity is > 95% (by SDS-PAGE). |
| Suggested Dilutions | <p>Dilute the sample so that the expected range of concentrations fall within the detection range of this kit.</p> <p>If the expected range of concentration is unknown, a pilot test should be conducted to decide the optimal dilution ratio for your samples.</p> <p>Some PubMed article(s) citing the expression level of this target are as follows:</p> <p>Boster Bio's internal QC testing used:</p> <p>WB: 1:500-1:1000</p> |

Anti-SLC6A16 Antibody (A14901-1) Images

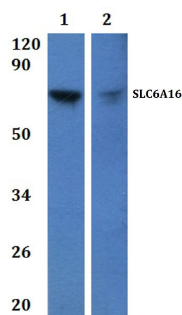


Figure 1. Western blotting validation for Anti-SLC6A16 Antibody A14901-1

Western blot (WB) analysis of SLC6A16 polyclonal antibody at 1:500 dilution Lane1:HEK293T whole cell lysate Lane2:H9C2 whole cell lysate Electrophoresis was performed on a SDS-PAGE gel. To determine SDS-PAGE gel concentration

Submit a product review to Biocompare.com

Submit a review of this product to Biocompare.com to receive a \$20 Amazon.com giftcard! Your reviews help your fellow scientists make the right decisions. Thank you for your contribution.



Anti-SLC6A16 Antibody