

## Anti-PLET1 Antibody Picoband®

Catalog Number: A14923-1

### About PLET1

PLET-1 (placenta -expressed transcript 1), also known as antigen mAgK114, is a 23 kDa membrane protein that is probably GPI-anchored. It is recognized by the antibodies MTS20 and MTS24. Mature mouse PLET-1, which most likely includes amino acids (aa) 28-216 of 237 aa, shares less than 60% aa sequence identity with the most closely related rat or human protein. A potential 194 aa mouse splice variant diverges after aa 149 but still contains a hydrophobic sequence at the Cterminus. PLET-1 is a marker of early thymic progenitor cells and pancreatic duct epithelium.

### Overview

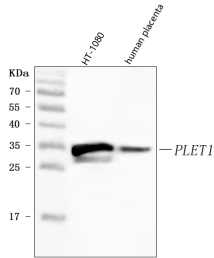
|                      |   |
|----------------------|---|
| Product Name         | Anti-PLET1 Antibody Picoband®   |
| Reactive Species     | Human   |
| Description          | Boster Bio Anti-PLET1 Antibody Picoband® catalog # A14923-1. Tested in ELISA, Flow Cytometry, WB applications. This antibody reacts with Human. The brand Picoband indicates this is a premium antibody that guarantees superior quality, high affinity, and strong signals with minimal background in Western blot applications. Only our best-performing antibodies are designated as Picoband, ensuring unmatched performance. |
| Application          | ELISA, Flow Cytometry, WB   |
| Clonality            | Polyclonal  |
| Formulation          | Each vial contains 4 mg Trehalose, 0.9 mg NaCl, 0.2 mg Na <sub>2</sub> HPO <sub>4</sub> .   |
| Storage Instructions | At -20°C for one year from date of receipt. After reconstitution, at 4°C for one month. It can also be aliquotted and stored frozen at -20°C for six months. Avoid repeated freezing and thawing.   |
| Host                 | Rabbit  |
| Uniprot ID           | Q6UQ28  |

### Technical Details

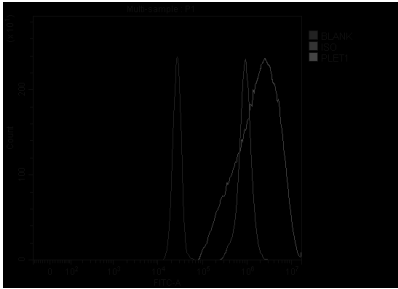
|                               |   |
|-------------------------------|---|
| Immunogen                     | E.coli-derived human PLET1 recombinant protein (Position: D46-K166).                            |
| Recommended Detection Systems | Boster recommends Enhanced Chemiluminescent Kit with anti-Rabbit IgG (EK1002) for Western blot. |
| Cross Reactivity              | No cross-reactivity with other proteins.  |
| Isotype                       | Rabbit IgG  |
| Form                          | Lyophilized   |
| Concentration                 | Adding 0.2 ml of distilled water will yield a concentration of 500 µg/ml.                       |

|                     |   |
|---------------------|---|
| Purification        | Immunogen affinity purified.  |
| Suggested Dilutions | Western blot, 0.25-0.5 ug/ml, Human<br>Flow Cytometry (Fixed), 1-3 ug / $1 \times 10^6$ cells, Human<br>ELISA, 0.1-0.5 ug/ml, - |

## Anti-PLET1 Antibody Picoband® (A14923-1) Images



Western blot analysis of PLET1 using anti-PLET1 antibody (A14923-1). Electrophoresis was performed on a 5-20% SDS-PAGE gel at 70V (Stacking gel) / 90V (Resolving gel) for 2-3 hours. The sample well of each lane was loaded with 30 ug of sample under reducing conditions. Lane 1: human HT-1080 whole cell lysates, Lane 2: human placenta tissue lysates. After electrophoresis, proteins were transferred to a nitrocellulose membrane at 150 mA for 50-90 minutes. Blocked the membrane with 5% non-fat milk/TBS for 1.5 hour at RT. The membrane was incubated with rabbit anti-PLET1 antigen affinity purified polyclonal antibody (Catalog # A14923-1) at 0.5 ug/mL overnight at 4°C, then washed with TBS-0.1%Tween 3 times with 5 minutes each and probed with a goat anti-rabbit IgG-HRP secondary antibody at a dilution of 1:5000 for 1.5 hour at RT. The signal is developed using an Enhanced Chemiluminescent detection (ECL) kit (Catalog # EK1002) with Tanon 5200 system. A specific band was detected for PLET1 at approximately 28 kDa. The expected band size for PLET1 is at 23,25 kDa.



Flow Cytometry analysis of SiHa cells using anti-PLET1 antibody (A14923-1). Overlay histogram showing SiHa cells stained with A14923-1 (Blue line). The cells were fixed with 4% paraformaldehyde and blocked with 10% normal goat serum. And then incubated with rabbit anti-PLET1 Antibody (A14923-1, 1 ug/1x10<sup>6</sup> cells) for 30 min at 20°C. DyLight®488 conjugated goat anti-rabbit IgG (BA1127, 5-10 ug/1x10<sup>6</sup> cells) was used as secondary antibody for 30 minutes at 20°C. Isotype control antibody (Green line) was rabbit IgG (1 ug/1x10<sup>6</sup>) used under the same conditions. Unlabelled sample (Red line) was also used as a control.

### Submit a product review to [Biocompare.com](https://www.biocompare.com)

Submit a review of this product to [Biocompare.com](https://www.biocompare.com) to receive a \$20 Amazon.com giftcard! Your reviews help your fellow scientists make the right decisions. Thank you for your contribution.



### Anti-PLET1 Antibody

For Research Use Only. Not for use in diagnostic procedures.