

## Anti-MRP-S34 (K214) Antibody

Catalog Number: A14945S34

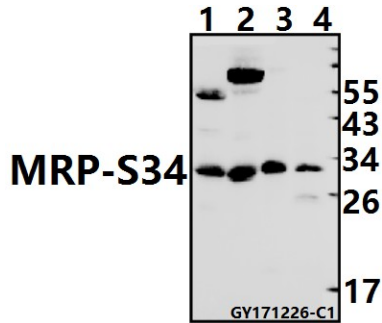
### Overview

Product Name	Anti-MRP-S34 (K214) Antibody
Reactive Species	Human, Mouse, Rat
Description	Boster Bio Anti-MRP-S34 (K214) Antibody catalog # A14945S34. Tested in WB,IP applications. This antibody reacts with Human,Mouse,Rat.
Application	IP, WB
Clonality	Polyclonal
Formulation	Rabbit IgG, 1mg/ml in PBS with 0.02% sodium azide, 50% glycerol, pH7.2
Storage Instructions	Store at -20°C for one year. For short term storage and frequent use, store at 4°C for up to one month. Avoid repeated freeze-thaw cycles.
Host	Rabbit
Uniprot ID	P82930

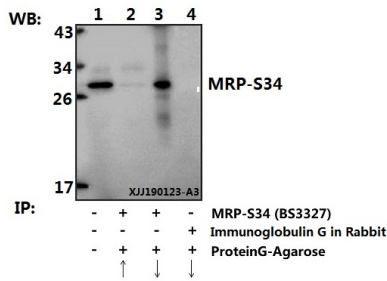
### Technical Details

Immunogen	Synthetic peptide, corresponding to amino acids 180-226 of Human MRP-S34.
Isotype	IgG
Form	Liquid
Concentration	1 mg/ml
Purification	The antibody was affinity-purified from rabbit antiserum by affinity-chromatography using epitope-specific immunogen and the purity is > 95% (by SDS-PAGE).
Suggested Dilutions	WB: 1:500-1:1000 IP: 1:10-1:100

## Anti-MRP-S34 (K214) Antibody (A14945S34) Images



Western blot (WB) analysis of MRP-S34 (K214) pAb at 1:1000 dilution  
Lane1:The Kidney tissue lysate of Rat(40ug)  
Lane2:The Kidney tissue lysate of Mouse(40ug)  
Lane3:HEK293T whole cell lysate(40ug) Lane4:Panc1 whole cell lysate(40ug)



Immunoprecipitation of Kidney tissue lysate of Mouse using MRP-S34 (K214) polyclonal antibody (Sephacrose Bead Conjugate) #BD0048(lane 2 and lane 3) and Nonspecific IgG Control (Sephacrose Bead Conjugate) #BD0048 (lane 4 ).Lane 1 is 30% input.The western blot was probed using MRP-S34 (K214) #BS3327." ↑ "supernatant"; ↓ (deposition)

## Submit a product review to Biocompare.com

Submit a review of this product to Biocompare.com to receive a \$20 Amazon.com giftcard! Your reviews help your fellow scientists make the right decisions. Thank you for your contribution.



Anti-MRP-S34 (K214) Antibody

For Research Use Only. Not for use in diagnostic procedures.