

## Anti-Protein yippee-like 2 YPEL2 Antibody

Catalog Number: A14962

### About YPEL2

YPEL2 (yippee-like 2) belongs to a family of five yippee-like proteins, all of which localize to the centrosome or mitotic spindle and are widely expressed in both adult and fetal tissue. This localization plus the fact that the family of human YPEL proteins share a high degree of sequence homology across species suggests that these proteins may have a conserved function involved in cell division. YPEL2 might be an important factor during the development and malignant transformation of tissues, most notably pancreatic and breast tumors.

### Overview

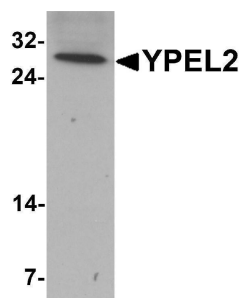
Product Name	Anti-Protein yippee-like 2 YPEL2 Antibody
Reactive Species	Human, Mouse
Description	Boster Bio Anti-Protein yippee-like 2 YPEL2 Antibody (Catalog # A14962). Tested in ELISA, WB, ICC, IF applications. This antibody reacts with Human, Mouse.
Application	ELISA, IF, ICC, WB
Clonality	Polyclonal
Formulation	YPEL2 Antibody is supplied in PBS containing 0.02% sodium azide.
Storage Instructions	YPEL2 antibody can be stored at 4°C for three months and -20°C, stable for up to one year. Avoid repeated freeze-thaw cycles. Antibodies should not be exposed to prolonged high temperatures.
Host	Rabbit
Uniprot ID	Q96QA6

### Technical Details

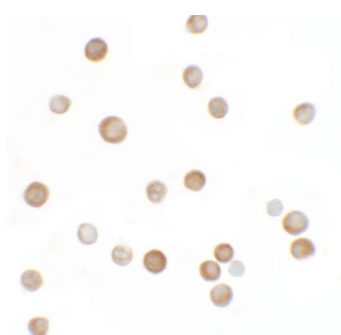
Immunogen	YPEL2 antibody was raised against a 17 amino acid synthetic peptide near the amino terminus of human YPEL2. The immunogen is located within amino acids 30 - 80 of YPEL2.
Predicted Reactive Species	Bovine
Isotype	IgG
Form	Liquid
Concentration	1 mg/mL
Purification	YPEL2 Antibody is affinity chromatography purified via peptide column.
Suggested Dilutions	YPEL2 antibody can be used for detection of YPEL2 by Western blot at 1 ug/mL. Antibody can also be used for immunocytochemistry starting at 2.5 ug/mL. For immunofluorescence start at 5 ug/mL. Antibody validated: Western Blot in human samples; Immunocytochemistry in human samples and

Immunofluorescence in human samples. All other applications and species not yet tested. Optimal dilutions for each application should be determined by the researcher.

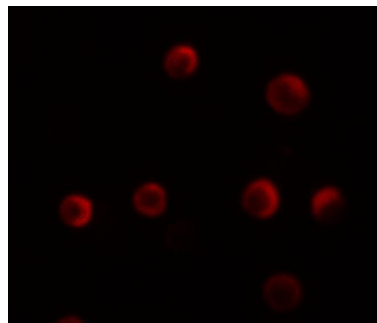
## Anti-Protein yippee-like 2 YPEL2 Antibody (A14962) Images



Western blot analysis of YPEL2 in HeLa cell lysate with YPEL2 antibody at 1 ug/mL.



Immunocytochemistry of YPEL2 in HeLa cells with YPEL2 antibody at 2.5 ug/mL.



Immunofluorescence of YPEL2 in HeLa cells with YPEL2 antibody at 5 ug/mL.

### Submit a product review to [Biocompare.com](https://www.biocompare.com)

Submit a review of this product to [Biocompare.com](https://www.biocompare.com) to receive a \$20 Amazon.com giftcard! Your reviews help your fellow scientists make the right decisions. Thank you for your contribution.



Anti-Protein yippee-like 2 YPEL2 Antibody

For Research Use Only. Not for use in diagnostic procedures.