

Anti-IA-6 INSM2 Antibody

Catalog Number: A14973

About INSM2

IA-6, also known as insulinoma-associated 2 or INSM2, is related to IA-1 (INSM1), a zinc-finger factor that is expressed in the developing nervous system. While the exact function of IA-6 is not known, other related insulinoma-associated proteins such as IA-2 are major autoantigens in type 1 diabetes. The homology exhibited by IA-6 to IA-1 has led to speculation that IA-6 may also play a role in the regulation of gene transcription.

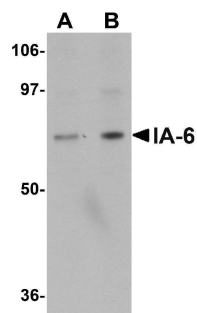
Overview

Product Name	Anti-IA-6 INSM2 Antibody
Reactive Species	Human, Mouse, Rat
Description	Boster Bio Anti-IA-6 INSM2 Antibody (Catalog # A14973). Tested in ELISA, WB applications. This antibody reacts with Human, Mouse, Rat.
Application	ELISA, WB
Clonality	Polyclonal
Formulation	IA-6 Antibody is supplied in PBS containing 0.02% sodium azide.
Storage Instructions	IA-6 antibody can be stored at 4°C for three months and -20°C, stable for up to one year. Avoid repeated freeze-thaw cycles. Antibodies should not be exposed to prolonged high temperatures.
Host	Rabbit
Uniprot ID	Q96T92

Technical Details

Immunogen	IA-6 antibody was raised against a 14 amino acid synthetic peptide from near the carboxy terminus of human IA-6. The immunogen is located within amino acids 340 - 390 of IA-6.
Predicted Reactive Species	Bovine
Isotype	IgG
Form	Liquid
Concentration	1 mg/mL
Purification	IA-6 Antibody is affinity chromatography purified via peptide column.
Suggested Dilutions	IA-6 antibody can be used for detection of IA-6 by Western blot at 1 - 2 ug/mL. Antibody validated: Western Blot in rat samples. All other applications and species not yet tested. Optimal dilutions for each application should be determined by the researcher.

Anti-IA-6 INSM2 Antibody (A14973) Images



Western blot analysis of IA-6 in rat thymus tissue lysate with IA-6 antibody at (A) 1 and (B) 2 ug/mL.

Submit a product review to Biocompare.com

Submit a review of this product to Biocompare.com to receive a \$20 Amazon.com giftcard! Your reviews help your fellow scientists make the right decisions. Thank you for your contribution.



Anti-IA-6 INSM2 Antibody

For Research Use Only. Not for use in diagnostic procedures.