

Anti-SHISA6 Antibody Picoband®

Catalog Number: A14975-1

About SHISA6

The deduced 551-amino acid human SHISA6 protein has a domain structure typical of SHISA proteins, including an N-terminal signal peptide, followed by a cysteine-rich domain, a transmembrane domain, and a C-terminal proline-rich region. SHISA6 belongs to a SHISA subfamily containing SHISA7, SHISA8, and SHISA9. The SHISA6 gene is mapped to chromosome 17p12 based on an alignment of the SHISA6 sequence (GenBank AK127379) with the genomic sequence (GRCh38).

Overview

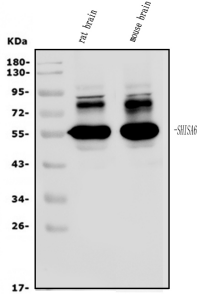
Product Name	Anti-SHISA6 Antibody Picoband®		
Reactive Species	Human, Mouse, Rat		
Description	Boster Bio Anti-SHISA6 Antibody Picoband® catalog # A14975-1. Tested in ELISA, Flow Cytometry, WB applications. This antibody reacts with Human, Mouse, Rat. The brand Picoband indicates this is a premium antibody that guarantees superior quality, high affinity, and strong signals with minimal background in Western blot applications. Only our best-performing antibodies are designated as Picoband, ensuring unmatched performance.		
Application	ELISA, Flow Cytometry, WB		
Application	Clonality	Polyclonal	
	Formulation	Each vial contains 4mg Trehalose, 0.9mg NaCl and 0.2mg Na2HPO4.	
	Storage Instructions	Store at -20°C for one year from date of receipt. After reconstitution, at 4°C for 6 months. Also be aliquotted and stored frozen at -20°C for six months. Avoid repeated freeze/thaw cycles.	
	Host	Rabbit	
	Uniprot ID	Q6ZSJ9	

Technical Details

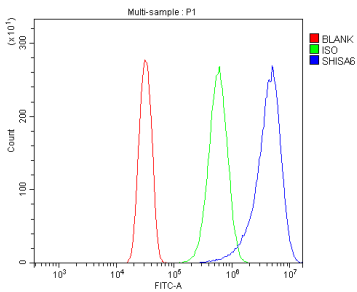
Immunogen	E.coli-derived human SHISA6 recombinant protein (Position: K253-Y483).
Recommended Detection Systems	Boster recommends Enhanced Chemiluminescent Kit with anti-Rabbit IgG (EK1002) for Western blot.
Cross Reactivity	No cross-reactivity with other proteins.
Isotype	Rabbit IgG
Form	Lyophilized
Concentration	Adding 0.2 ml of distilled water will yield a concentration of 500 ug/ml.

Purification	Immunogen affinity purified.
Suggested Dilutions	Western blot, 0.25-0.5ug/ml, Mouse, Rat Flow Cytometry (Fixed), 1-3ug/1x10 ⁶ cells, Human ELISA, 0.1-0.5ug/ml, -

Anti-SHISA6 Antibody Picoband® (A14975-1) Images



Western blot analysis of SHISA6 using anti-SHISA6 antibody (A14975-1). Electrophoresis was performed on a 5-20% SDS-PAGE gel at 70V (Stacking gel) / 90V (Resolving gel) for 2-3 hours. The sample well of each lane was loaded with 50ug of sample under reducing conditions. Lane 1: rat brain tissue lysates, Lane 2: mouse brain tissue lysates. After Electrophoresis, proteins were transferred to a Nitrocellulose membrane at 150mA for 50-90 minutes. Blocked the membrane with 5% Non-fat Milk/ TBS for 1.5 hour at RT. The membrane was incubated with rabbit anti-SHISA6 antigen affinity purified polyclonal antibody (Catalog # A14975-1) at 0.5 ug/mL overnight at 4°C, then washed with TBS-0.1%Tween 3 times with 5 minutes each and probed with a goat anti-rabbit IgG-HRP secondary antibody at a dilution of 1:5000 for 1.5 hour at RT. The signal is developed using an Enhanced Chemiluminescent detection (ECL) kit (Catalog # EK1002) with Tanon 5200 system. A specific band was detected for SHISA6 at approximately 56KD. The expected band size for SHISA6 is at 56KD.



Flow Cytometry analysis of U20S cells using anti-SHISA6 antibody (A14975-1). Overlay histogram showing U20S cells stained with A14975-1 (Blue line). The cells were fixed with 4% paraformaldehyde and blocked with 10% normal goat serum. And then incubated with rabbit anti-SHISA6 Antibody (A14975-1, 1ug/1x10⁶ cells) for 30 min at 20°C. DyLight®488 conjugated goat anti-rabbit IgG (BA1127, 5-10ug/1x10⁶ cells) was used as secondary antibody for 30 minutes at 20°C. Isotype control antibody (Green line) was rabbit IgG (1ug/1x10⁶) used under the same conditions. Unlabelled sample without incubation with primary antibody and secondary antibody (Red line) was used as a blank control.

Submit a product review to Biocompare.com

Submit a review of this product to Biocompare.com to receive a \$20 Amazon.com giftcard! Your reviews help your fellow scientists make the right decisions. Thank you for your contribution.



Anti-SHISA6 Antibody

For Research Use Only. Not for use in diagnostic procedures.