

Anti-WIPF3 Antibody Picoband®

Catalog Number: A14977

About WIPF3

Predicted to enable SH3 domain binding activity and actin binding activity. Predicted to be involved in actin filament-based movement. Predicted to be located in cytosol. Predicted to be active in actin filament.

Overview

Product Name	Anti-WIPF3 Antibody Picoband®
Reactive Species	Human
Description	Boster Bio Anti-WIPF3 Antibody Picoband® catalog # A14977. Tested in Flow Cytometry, WB applications. This antibody reacts with Human. The brand Picoband indicates this is a premium antibody that guarantees superior quality, high affinity, and strong signals with minimal background in Western blot applications. Only our best-performing antibodies are designated as Picoband, ensuring unmatched performance.
Application	Flow Cytometry, WB
Clonality	Polyclonal
Formulation	Each vial contains 4 mg Trehalose, 0.9 mg NaCl, 0.2 mg Na ₂ HPO ₄ .
Storage Instructions	At -20°C for one year from date of receipt. After reconstitution, at 4°C for one month. It can also be aliquotted and stored frozen at -20°C for six months. Avoid repeated freezing and thawing.
Host	Rabbit
Uniprot ID	A6NGB9

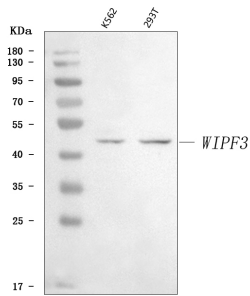
Technical Details

Immunogen	A synthetic peptide corresponding to a sequence at the C-terminus of human WIPF3, which shares 95.5% and 90.9% amino acid (aa) sequence identity with mouse and rat WIPF3, respectively.
Recommended Detection Systems	Boster recommends Enhanced Chemiluminescent Kit with anti-Rabbit IgG (EK1002) for Western blot.
Cross Reactivity	No cross-reactivity with other proteins.
Isotype	Rabbit IgG
Form	Lyophilized
Concentration	Adding 0.2 ml of distilled water will yield a concentration of 500 µg/ml.
Purification	Immunogen affinity purified.

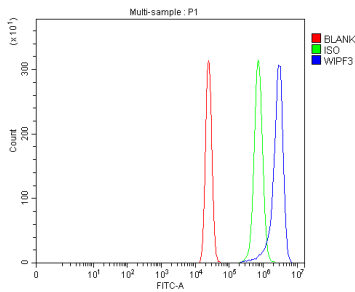
Suggested Dilutions

Western blot, 0.25-0.5 $\mu\text{g/ml}$, Human
Flow Cytometry (Fixed), 1-3 $\mu\text{g}/1 \times 10^6$ cells, Human

Anti-WIPF3 Antibody Picoband® (A14977) Images



Western blot analysis of WIPF3 using anti-WIPF3 antibody (A14977). Electrophoresis was performed on a 5-20% SDS-PAGE gel at 70V (Stacking gel) / 90V (Resolving gel) for 2-3 hours. The sample well of each lane was loaded with 30 ug of sample under reducing conditions. Lane 1: human K562 whole cell lysates, Lane 2: human 293T whole cell lysates. After electrophoresis, proteins were transferred to a nitrocellulose membrane at 150 mA for 50-90 minutes. Blocked the membrane with 5% non-fat milk/TBS for 1.5 hour at RT. The membrane was incubated with rabbit anti-WIPF3 antigen affinity purified polyclonal antibody (Catalog # A14977) at 0.5 ug/mL overnight at 4°C, then washed with TBS-0.1%Tween 3 times with 5 minutes each and probed with a goat anti-rabbit IgG-HRP secondary antibody at a dilution of 1:5000 for 1.5 hour at RT. The signal is developed using an Enhanced Chemiluminescent detection (ECL) kit (Catalog # EK1002) with Tanon 5200 system. A specific band was detected for WIPF3 at approximately 49 kDa. The expected band size for WIPF3 is at 49 kDa.



Flow Cytometry analysis of U2OS cells using anti-WIPF3 antibody (A14977). Overlay histogram showing U2OS cells stained with A14977 (Blue line). To facilitate intracellular staining, cells were fixed with 4% paraformaldehyde and permeabilized with permeabilization buffer. The cells were blocked with 10% normal goat serum. And then incubated with rabbit anti-WIPF3 Antibody (A14977, 1 ug/1x10⁶ cells) for 30 min at 20°C. DyLight®488 conjugated goat anti-rabbit IgG (BA1127, 5-10 ug/1x10⁶ cells) was used as secondary antibody for 30 minutes at 20°C. Isotype control antibody (Green line) was rabbit IgG (1 ug/1x10⁶) used under the same conditions. Unlabelled sample without incubation with primary antibody and secondary antibody (Red line) was used as a blank control.

Submit a product review to [Biocompare.com](https://www.biocompare.com)

Submit a review of this product to [Biocompare.com](https://www.biocompare.com) to receive a \$20 Amazon.com giftcard! Your reviews help your fellow scientists make the right decisions. Thank you for your contribution.



Anti-WIPF3 Antibody

For Research Use Only. Not for use in diagnostic procedures.