

## Anti-PTTG2 Antibody (Center)

Catalog Number: A15119

### About PTTG2

May be involved in transcriptional regulation.

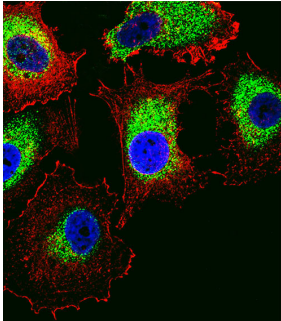
### Overview

Product Name	Anti-PTTG2 Antibody (Center)
Reactive Species	Human
Description	Boster Bio Anti-PTTG2 Antibody (Center) (Catalog # A15119). Tested in IF, WB application(s). This antibody reacts with Human.
Application	IF, WB
Clonality	Polyclonal
Formulation	Purified polyclonal antibody supplied in PBS with 0.09% (W/V) sodium azide.
Storage Instructions	Maintain refrigerated at 2-8°C for up to 2 weeks. For long-term storage, store at -20°C in small aliquots to prevent freeze-thaw cycles.
Host	Rabbit
Uniprot ID	Q9NZH5

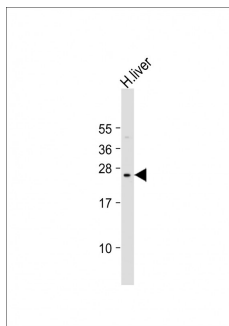
### Technical Details

Immunogen	This PTTG2 antibody is generated from rabbits immunized with a KLH conjugated synthetic peptide between 56-84 amino acids from the Central region of human PTTG2.
Predicted Reactive Species	Mouse, Rat
Isotype	Rabbit IgG
Purification	This antibody is purified through a protein A column, followed by peptide affinity purification.
Suggested Dilutions	IF: 1:10-1:50 WB: 1:1000

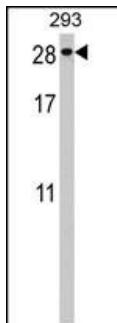
## Anti-PTTG2 Antibody (Center) (A15119) Images



Fluorescent confocal image of MCF-7 cell stained with PTTG2 Antibody (Center). MCF-7 cells were fixed with 4% PFA (20 min), permeabilized with Triton X-100 (0.1%, 10 min), then incubated with PTTG2 primary antibody (1:25, 1 h at 37°C). For secondary antibody, Alexa Fluor® 488 conjugated donkey anti-rabbit antibody (green) was used (1:400, 50 min at 37°C). Cytoplasmic actin was counterstained with Alexa Fluor® 555 (red) conjugated Phalloidin at 37°C. Nuclei were counterstained with DAPI (blue) (10 µg/ml, 10 min). PTTG2 immunoreactivity is localized to Cytoplasm significantly.



Anti-PTTG2 Antibody (Center) at 1:2000 dilution + human liver lysateLysates/proteins at 20 µg per lane. SecondaryGoat Anti-Rabbit IgG, (H+L), Peroxidase conjugated at 1/10000 dilution. Predicted band size : 22 kDaBlocking/Dilution buffer: 5% NFDM/TBST.



PTTG2 Antibody (Center) (Cat. #A15119) western blot analysis in 293 cell line lysates (35ug/lane). This demonstrates the PTTG2 antibody detected the PTTG2 protein (arrow).

### Submit a product review to Biocompare.com

Submit a review of this product to Biocompare.com to receive a \$20 Amazon.com giftcard! Your reviews help your fellow scientists make the right decisions. Thank you for your contribution.



Anti-PTTG2 Antibody (Center)

For Research Use Only. Not for use in diagnostic procedures.