

## Anti-TMEM38A Antibody

Catalog Number: A15150

### About TMEM38A

TMEM38A and TMEM38B are two recently identified trimeric intracellular cation (TRIC) channel subtypes. TMEM38A is preferentially expressed in excitable tissues such as striated muscle and brain and localizes to the sarcoplasmic reticulum (SR) in muscle tissues. Mice deficient in both TMEM38A and TMEM38B suffer embryonic cardiac failure; the cardiac myocytes display severe dysfunction in SR Ca<sup>2+</sup> handling, weakened Ca<sup>2+</sup> release, and reduced K<sup>+</sup> permeability indicating that the TRIC cation channels are likely to act as counter-ion channels that function in synchronization with Ca<sup>2+</sup> release from intracellular stores. Other experiments have shown that TMEM38A and TMEM38B can act with junctophilin proteins to support efficient ryanodine receptor-mediated Ca<sup>2+</sup> release in muscle cells.

### Overview

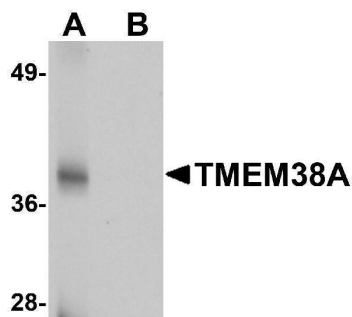
Product Name	Anti-TMEM38A Antibody
Reactive Species	Human, Mouse, Rat
Description	Boster Bio Anti-TMEM38A Antibody (Catalog # A15150). Tested in ELISA, WB, IF applications. This antibody reacts with Human, Mouse, Rat.
Application	ELISA, IF, WB
Clonality	Polyclonal
Formulation	TMEM38A Antibody is supplied in PBS containing 0.02% sodium azide.
Storage Instructions	TMEM38A antibody can be stored at 4°C for three months and -20°C, stable for up to one year. Avoid repeated freeze-thaw cycles. Antibodies should not be exposed to prolonged high temperatures.
Host	Rabbit
Uniprot ID	Q9H6F2

### Technical Details

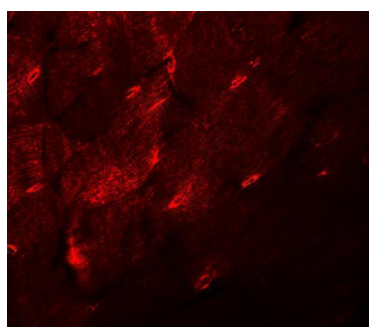
Immunogen	TMEM38A antibody was raised against a 17 amino acid synthetic peptide from near the carboxy terminus of human TMEM38A. The immunogen is located within the last 50 amino acids of TMEM38A.
Predicted Reactive Species	Bovine, Chicken, Rabbit
Isotype	IgG
Form	Liquid
Concentration	1 mg/mL

Purification	TMEM38A Antibody is affinity chromatography purified via peptide column.
Suggested Dilutions	TMEM38A antibody can be used for detection of TMEM38A by Western blot at 1 ug/mL. For immunofluorescence start at 20 ug/mL. Antibody validated: Western Blot in rat samples and Immunofluorescence in mouse samples. All other applications and species not yet tested. Optimal dilutions for each application should be determined by the researcher.

## Anti-TMEM38A Antibody (A15150) Images



Western blot analysis of TMEM38A in rat skeletal muscle tissue lysate with TMEM38A antibody at 1 ug/mL in (A) the absence and (B) the presence of blocking peptide.



Immunofluorescence of TMEM38A in mouse skeletal muscle tissue with TMEM38A antibody at 20 ug/mL.

### Submit a product review to [Biocompare.com](https://www.biocompare.com)

Submit a review of this product to [Biocompare.com](https://www.biocompare.com) to receive a \$20 Amazon.com giftcard! Your reviews help your fellow scientists make the right decisions. Thank you for your contribution.



Anti-TMEM38A Antibody

For Research Use Only. Not for use in diagnostic procedures.