

Anti-GLIPR1-like protein 1 GLIPR1L1 Antibody

Catalog Number: A15155

About GLIPR1L1

The GLIPR1-like 1 protein (GLIPR1L1) gene is part of a p53 target gene cluster that includes the related proteins GLIPR1 and GLIPR1L2 (1). GLIPR1L1 is similar to both the pathogenesis-related protein (PR) superfamily and the cysteine-rich secretory protein (CRISP) family (2). GLIPR1 is a tumor suppressor whose expression is regulated by p53 (3). Unlike GLIPR1, GLIPR1L1 is expressed primarily in the testis and is thought to be involved in the binding of sperm to the oocyte complex (4).

Overview

Product Name	Anti-GLIPR1-like protein 1 GLIPR1L1 Antibody
Reactive Species	Human
Description	Boster Bio Anti-GLIPR1-like protein 1 GLIPR1L1 Antibody (Catalog # A15155). Tested in ELISA, WB, IHC-P, IF applications. This antibody reacts with Human.
Application	ELISA, IF, IHC-P, WB
Clonality	Polyclonal
Formulation	GLIPR1L1 antibody is supplied in PBS containing 0.02% sodium azide.
Storage Instructions	Antibody can be stored at 4°C up to one year. Antibodies should not be exposed to prolonged high temperatures.
Host	Rabbit
Uniprot ID	Q6UWM5

Technical Details

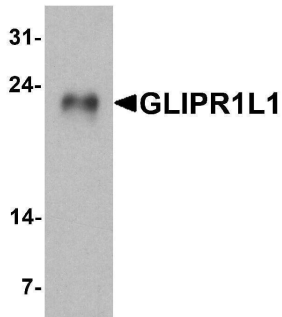
Immunogen	GLIPR1L1 antibody was raised against an 18 amino acid peptide near the amino terminus of human GLIPR1L1. The immunogen is located within amino acids 20 - 70 of GLIPR1L1.
Predicted Reactive Species	Bovine, Chicken, Rabbit
Cross Reactivity	GLIPR1L1 antibody is human specific. At least two isoforms of GLIPR1L1 are known to exist; this antibody will detect both isoforms. This antibody is predicted to not cross-react with other GLIPR or GLIPR-like proteins.
Isotype	IgG
Form	Liquid
Concentration	1 mg/mL
Purification	GLIPR1L1 antibody is affinity chromatography purified via peptide column.

Suggested Dilutions

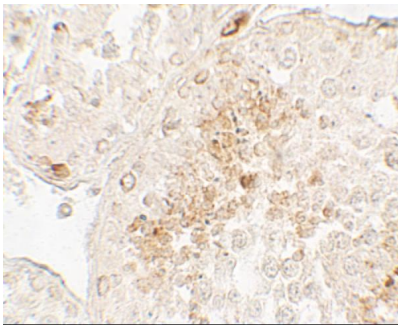
GLIPR1L1 antibody can be used for detection of GLIPR1L1 by Western blot at 1 - 2 ug/ml. Antibody can also be used for Immunohistochemistry starting at 5 ug/mL. For immunofluorescence start at 20 ug/mL.

Antibody validated: Western Blot in human samples; Immunohistochemistry in human samples and Immunofluorescence in human samples. All other applications and species not yet tested. Optimal dilutions for each application should be determined by the researcher.

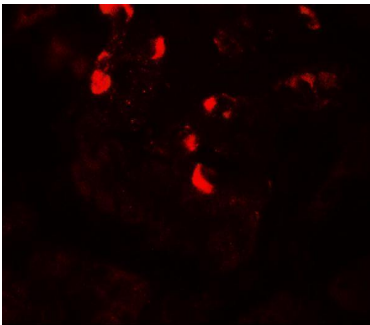
Anti-GLIPR1-like protein 1 GLIPR1L1 Antibody (A15155) Images



Western blot analysis of GLIPR1L1 in human testis tissue lysate with GLIPR1L1 antibody at 1 ug/ml.



Immunohistochemistry of GLIPR1L1 in human testis tissue with GLIPR1L1 antibody at 5 ug/mL.



Immunofluorescence of GLIPR1L1 in human testis tissue with GLIPR1L1 antibody at 20 ug/mL.

Submit a product review to [Biocompare.com](https://www.biocompare.com)

Submit a review of this product to [Biocompare.com](https://www.biocompare.com) to receive a \$20 Amazon.com giftcard! Your reviews help your fellow scientists make the right decisions. Thank you for your contribution.



Anti-GLIPR1-like protein 1 GLIPR1L1 Antibody

For Research Use Only. Not for use in diagnostic procedures.