

## Anti-RL22L RPL22L1 Antibody

Catalog Number: A15161-1

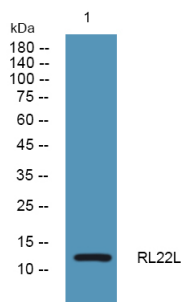
### Overview

Product Name	Anti-RL22L RPL22L1 Antibody
Reactive Species	Human, Mouse
Description	Boster Bio Anti-RL22L RPL22L1 Antibody catalog # A15161-1. Tested in WB, IP, ELISA applications. This antibody reacts with Human, Mouse.
Application	ELISA, IP, WB
Clonality	Polyclonal
Formulation	Liquid form in PBS containing 50% glycerol, and 0.02% sodium azide.
Storage Instructions	Store at -20°C for one year. For short term storage and frequent use, store at 4°C for up to one month. Avoid repeated freeze-thaw cycles.
Host	Rabbit
Uniprot ID	Q6P5R6

### Technical Details

Immunogen	Synthesized peptide derived from human protein at AA range: 30-110
Isotype	IgG
Form	Liquid
Concentration	1 mg/ml
Purification	RL22L antibody was affinity-purified from rabbit antiserum by affinity-chromatography using epitope-specific immunogen.
Suggested Dilutions	IP 1:50-200 WB 1:500-2000 ELISA 1:5000-20000

## Anti-RL22L RPL22L1 Antibody (A15161-1) Images



Western blot analysis of lysates from PC12 cells, primary antibody was diluted at 1:1000, 4°over night

### Submit a product review to Biocompare.com

Submit a review of this product to Biocompare.com to receive a \$20 Amazon.com giftcard! Your reviews help your fellow scientists make the right decisions. Thank you for your contribution.



Anti-RL22L RPL22L1 Antibody

For Research Use Only. Not for use in diagnostic procedures.