

Anti-GAS2L2 Antibody Picoband®

Catalog Number: A15171

About GAS2L2

The protein encoded by this gene appears to crosslink microtubules and microfilaments and may be part of the cytoskeleton. This gene is mainly expressed in skeletal muscle.

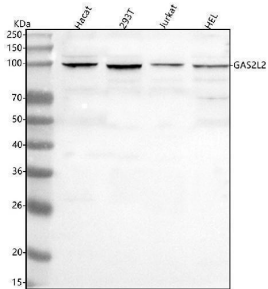
Overview

Product Name	Anti-GAS2L2 Antibody Picoband®
Reactive Species	Human
Description	Boster Bio Anti-GAS2L2 Antibody Picoband® catalog # A15171. Tested in WB, ELISA applications. This antibody reacts with Human. The brand Picoband indicates this is a premium antibody that guarantees superior quality, high affinity, and strong signals with minimal background in Western blot applications. Only our best-performing antibodies are designated as Picoband, ensuring unmatched performance.
Application	ELISA, WB
Clonality	Polyclonal
Formulation	Each vial contains 4 mg Trehalose, 0.9 mg NaCl, 0.2 mg Na ₂ HPO ₄ .
Storage Instructions	At -20°C for one year from date of receipt. After reconstitution, at 4°C for one month. It can also be aliquotted and stored frozen at -20°C for six months. Avoid repeated freezing and thawing.
Host	Rabbit
Uniprot ID	Q8NHY3

Technical Details

Immunogen	E.coli-derived human GAS2L2 recombinant protein (Position: R43-R829). Human GAS2L2 shares 68.6% and 67.4% amino acid (aa) sequence identity with mouse and rat GAS2L2, respectively.
Recommended Detection Systems	Boster recommends Enhanced Chemiluminescent Kit with anti-Rabbit IgG (EK1002) for Western blot.
Form	Lyophilized
Concentration	Adding 0.2 ml of distilled water will yield a concentration of 500 µg/ml.
Purification	Immunogen affinity purified.
Suggested Dilutions	Western blot, 0.25-0.5 µg/ml, Human ELISA, 0.1-0.5 µg/ml, -

Anti-GAS2L2 Antibody Picoband® (A15171) Images



Western blot analysis of GAS2L2 using anti-GAS2L2 antibody (A15171). Electrophoresis was performed on a 5-20% SDS-PAGE gel at 70V (Stacking gel) / 90V (Resolving gel) for 2-3 hours. The sample well of each lane was loaded with 30 ug of sample under reducing conditions. Lane 1: human Hacat whole cell lysates, Lane 2: human 293T whole cell lysates, Lane 3: human Jurkat whole cell lysates, Lane 4: human HEL whole cell lysates. After electrophoresis, proteins were transferred to a nitrocellulose membrane at 150 mA for 50-90 minutes. Blocked the membrane with 5% non-fat milk/TBS for 1.5 hour at RT. The membrane was incubated with rabbit anti-GAS2L2 antigen affinity purified polyclonal antibody (Catalog # A15171) at 0.5 ug/mL overnight at 4°C, then washed with TBS-0.1%Tween 3 times with 5 minutes each and probed with a goat anti-rabbit IgG-HRP secondary antibody at a dilution of 1:5000 for 1.5 hour at RT. The signal is developed using an Enhanced Chemiluminescent detection (ECL) kit (Catalog # EK1002) with Tanon 5200 system. A specific band was detected for GAS2L2 at approximately 97 kDa. The expected band size for GAS2L2 is at 97 kDa.

Submit a product review to Biocompare.com

Submit a review of this product to Biocompare.com to receive a \$20 Amazon.com giftcard! Your reviews help your fellow scientists make the right decisions. Thank you for your contribution.



Anti-GAS2L2 Antibody

For Research Use Only. Not for use in diagnostic procedures.