

Anti-Protein yippee-like 5 YPEL5 Antibody

Catalog Number: A15188

About YPEL5

YPEL5 (yippee-like 5) belongs to a family of five yippee-like proteins, all of which localize to the centrosome or mitotic spindle and are widely expressed in both adult and fetal tissue. This localization plus the fact that the family of human YPEL proteins share a high degree of sequence homology across species suggests that these proteins may have a conserved function involved in cell division. YPEL5 is expressed at the nucleus and centrosome during interphase; during mitosis, it localizes to the spindle poles, mitotic spindle, and spindle midzone during mitosis. Finally, during cytokinesis, YPEL5 is localized to the midbody. It is associated with the Ran Binding Protein in the Microtubule organizing center (RanBPM) and a related protein RanBP10.

Overview

Product Name	Anti-Protein yippee-like 5 YPEL5 Antibody
Reactive Species	Human, Mouse
Description	Boster Bio Anti-Protein yippee-like 5 YPEL5 Antibody (Catalog # A15188). Tested in ELISA, WB, ICC, IF applications. This antibody reacts with Human, Mouse.
Application	ELISA, IF, ICC, WB
Clonality	Polyclonal
Formulation	YPEL5 Antibody is supplied in PBS containing 0.02% sodium azide.
Storage Instructions	YPEL5 antibody can be stored at 4°C for three months and -20°C, stable for up to one year. Avoid repeated freeze-thaw cycles. Antibodies should not be exposed to prolonged high temperatures.
Host	Rabbit
Uniprot ID	P62699

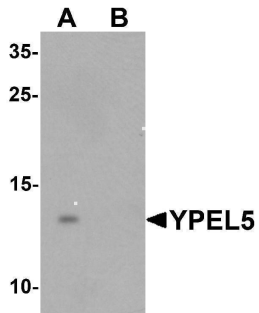
Technical Details

Immunogen	YPEL5 antibody was raised against a 14 amino acid synthetic peptide near the amino terminus of human YPEL5. The immunogen is located within the first 50 amino acids of YPEL5.
Predicted Reactive Species	Bovine
Isotype	IgG
Form	Liquid
Concentration	1 mg/mL
Purification	YPEL5 Antibody is affinity chromatography purified via peptide column.

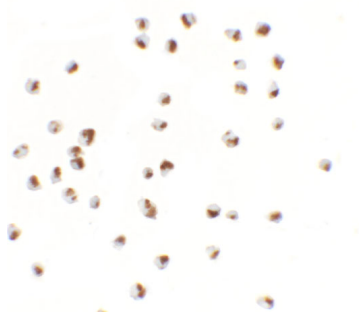
Suggested Dilutions

YPEL5 antibody can be used for detection of YPEL5 by Western blot at 1 ug/mL. Antibody can also be used for immunocytochemistry starting at 2.5 ug/mL. For immunofluorescence start at 2.5 ug/mL. Antibody validated: Western Blot in mouse samples; Immunocytochemistry in mouse samples and Immunofluorescence in mouse samples. All other applications and species not yet tested. Optimal dilutions for each application should be determined by the researcher.

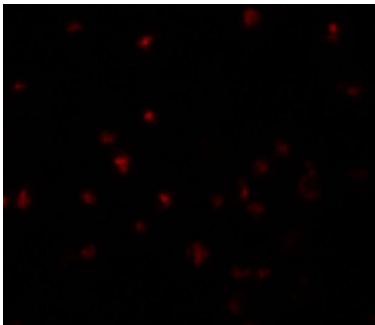
Anti-Protein yippee-like 5 YPEL5 Antibody (A15188) Images



Western blot analysis of YPEL5 in A-20 cell lysate with YPEL5 antibody at 1 ug/mL in (A) the absence and (B) the presence of blocking peptide.



Immunocytochemistry of YPEL5 in A20 cells with YPEL5 antibody at 2.5 ug/mL.



Immunofluorescence of YPEL5 in A20 cells with YPEL5 antibody at 5 ug/mL.

Submit a product review to [Biocompare.com](https://www.biocompare.com)

Submit a review of this product to [Biocompare.com](https://www.biocompare.com) to receive a \$20 Amazon.com giftcard! Your reviews help your fellow scientists make the right decisions. Thank you for your contribution.



Anti-Protein yippee-like 5 YPEL5 Antibody

For Research Use Only. Not for use in diagnostic procedures.